

T R I N I T Y



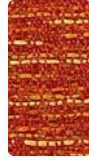
Fuse Pristine



Saffron



MalTED



Pimento



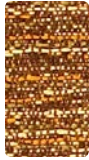
Cress



Lunar



Iris



Morel



Walnut



Ginger



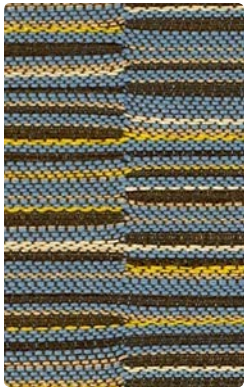
Carmine



Azurean



Pepper



Lineup Tranquil



Sandstone



Fern



Spice



Baltic



Pewter



Shadow



Hue Sky



Dandelion



Stem



Latte



Paprika



Salsa



Char



Frothe



Cocoa



Indigo



Currant



Grape



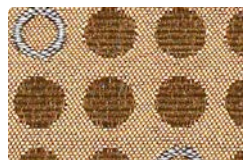
Black



Knack Wave



Glaze



Teak



Zing



Zest



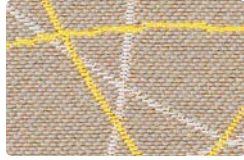
Brisk



Carbon



Free Pearl



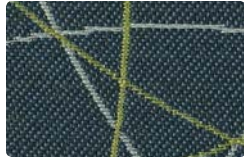
Platinum



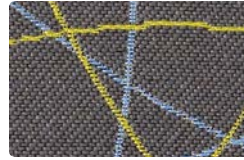
Cocoa



Graphite



Oasis



Evening



Orbit



Boom II Mirror



Mystic



Toucan



Honeycomb



Poppy



Mushroom



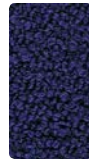
Wall Street



Frothe



Foliage



Klein



Stout



Sapphire



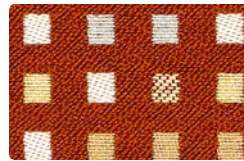
Black Ice



Kinney Glacier



Frappe



Nectar



Steel



Valentine



Mineral



Coffee



Solace Nickel



Almond



Fossil



Maui



Pear



Celadon



Mineral



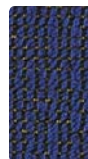
Azul



Earth



Indigo



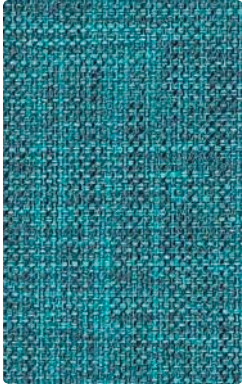
Lapis



Paprika



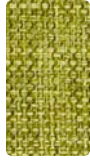
Ebony



Cover Cloth Cyan



Platinum



Sorrel



Vesper



Antique



Zest



Savor



Taupe



Indigo



Hickory



Coffee



Electric



Graphite



Canter Quarry



Sand



Polar Blue



Blush Grey



Saddle



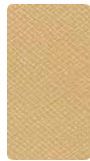
Nimbus



Earth



Nifty Pool



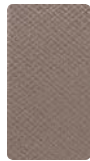
Sesame



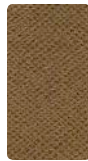
Wasabi



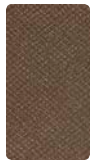
Adobe



Solstice



Relic



Fossil



Par



Rain



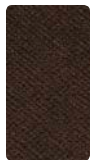
Nickel



Hudson



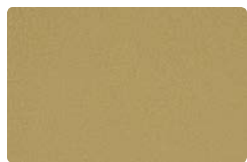
Surge



Root



Silica Alloy



Burnished



Aqua



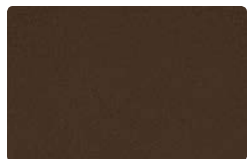
Brownstone



Quartz



Regatta



Terra

TECHNICAL INFORMATION

Width - Pattern	Fiber Content & Backing	Finish	Abrasion (D.R.)	Light-fastness	Approx. Repeats	Cl. Code
58" BOOM II ☛ ☛ ☛ ☛ ☛ *	71% Post Consumer Recycled Polyester, 29% Polyester Acrylic Backing	Soil & Stain Resistant	150,000	40 Hrs. Class 5		WS
54" CANTER ☛ ☛ ☛ ☛ ☛ *	100% Polyurethane / PVC Free Polyester Backing		240,000	200 Hrs. Class 4.5		W Bleach Cleanable (4:1)
59" COVER CLOTH ☛ ☛ ☛ ☛ ☛ *	56% Repreve® Post Consumer Recycled Polyester, 44% Polyester	Crypton Green®	200,000	40 Hrs. Class 4		W Bleach Cleanable (10:1)
57" FREE ☛ ☛ ☛ ☛ ☛ *	100% Post Consumer Recycled Polyester Acrylic Backing	Soil & Stain Resistant	100,000	40 Hrs. Class 4	5 3/8" L, 5" W	WS
54" FUSE ☛ ☛ ☛ ☛ ☛ *	65% Post Industrial Recycled Polyester, 35% Post Consumer Recycled Polyester Latex Backing	Soil & Stain Resistant	100,000	40 Hrs. Class 4.5		WS
54" HUE ☛ ☛ ☛ ☛ ☛ *	65% Post Industrial Recycled Polyester, 35% Post Consumer Recycled Polyester Latex Backing	Teflon®	1,000,000	60 Hrs. Class 4.5		WS
57" KINNEY ☛ ☛ ☛ ☛ ☛ *	56% Post Consumer Recycled Polyester, 44% Polyester Acrylic Backing	Soil & Stain Resistant	100,000	40 Hrs. Class 4	5 3/8" L, 5" W	WS
54" KNACK ☛ ☛ ☛ ☛ ☛ *	100% Post Consumer Recycled Polyester Acrylic Backing	Soil & Stain Resistant	100,000	40 Hrs. Class 5	1 3/8" L, 1 3/4" W	WS
56" LINEUP ☛ ☛ ☛ ☛ ☛ *	100% Post Consumer Recycled Polyester Acrylic Backing	Soil & Stain Resistant	100,000	40 Hrs. Class 5	1 3/4" L, 3 3/4" W	WS
54" NIFTY ☛ ☛ ☛ ☛ ☛ *	100% Polyurethane / PVC Free Polyester Backing		500,000	200 Hrs. Class 4.5		W Bleach Cleanable (4:1)
54" SILICA ☛ ☛ ☛ ☛ ☛ *	100% Silicone Polyester Backing		365,000	200 Hrs. Class 4.5		WS Bleach Cleanable (4:1)
55" SOLACE ☛ ☛ ☛ ☛ ☛ *	49% Polyester, 41% Post Industrial Recycled Polyester, 10% Post Consumer Recycled Polyester Acrylic Backing	Soil & Stain Resistant	100,000	40 Hrs. Class 4		WS

*ACT® Registered Certification Marks
All Patterns meet CA Bulletin 117-2013
Primary Application: Upholstery Seating

Cleaning Code Definitions
W: Water-based foam or cleaner.
WS: Water-based cleaning agents or foam.

For additional patterns and colors visit memosamples.com.
Memo samples are available upon request: call, order online,
or email customerservice@momtex.com



In 5 simple clicks, you can find hundreds
of pre-approved, in grade, and in stock fabrics.

T R I N I T Y

MOMENTUM
T E X T I L E S

P.O. Box 150
Trinity, NC 27370
T 336.472.6660 F 336.475.0037 TF 855.311.6660
sales@trinityfurniture.com www.trinityfurniture.com

Tel. 949-833-8886
800-366-6839
Fax 949-833-9233
memosamples.com