



PERFORMANCE VALUE COORDINATES

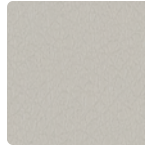
MAYERFABRICS + T R I N I T Y



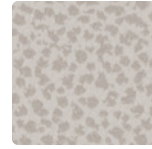
PORTER
WC980-017 Marble



SANCTUARY
643-007 Ivory



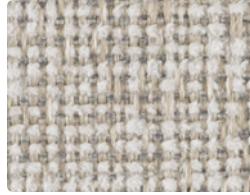
RYDER
RY-017 Light Grey



LUDLOW
LD-007 Quartz



RYDER
RY-016 Dovetail



SEVILLE
642-007 Linen



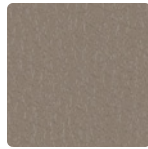
ADLER
640-007 Marble



RYDER
RY-027 Pumice



LUDLOW
LD-017 Vanilla



RYDER
RY-037 Griffin



LANCASTER
332-006 Mineral



SANCTUARY
643-016 Platinum



SANCTUARY
643-002 Honey



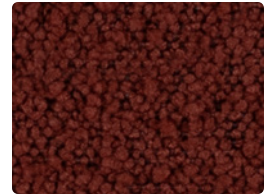
RITZI
401-019 Turmeric



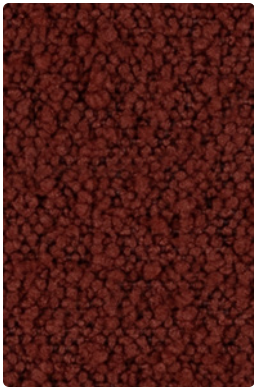
PORTER
WC980-009 Tuscan



SEVILLE
642-006 Tin



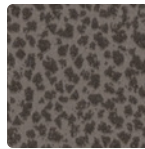
RITZI
401-010 Shiitake



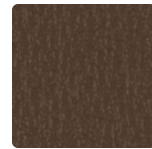
RITZI
401-011 Maroon



PORTER
WC980-008 Cabernet



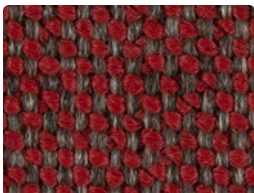
LUDLOW
LD-010 Griffin



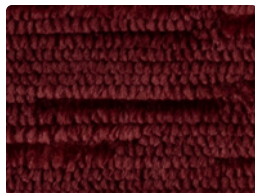
RYDER
RY-000 Mocha



LUDLOW
LD-050 Chestnut



LANCASTER
332-001 Cardinal



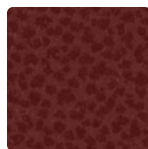
SANCTUARY
643-011 Bordeaux



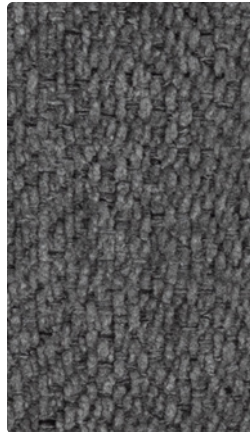
LUDLOW
LD-060 Tungsten



RYDER
RY-019 Burnt Sienna



LUDLOW
LD-001 Cranberry

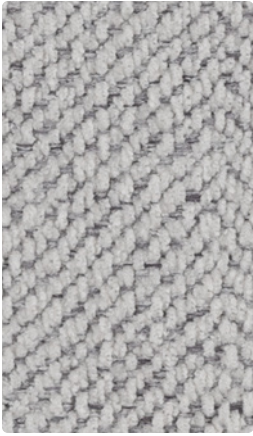


ADLER
640-016 Slate



LANCASTER
332-016 Masonry

Additional colors are available. Please refer to the Mayer Fabrics website.



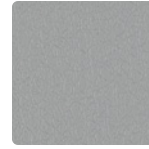
ADLER
640-006 Alloy



SANCTUARY
643-006 Dew



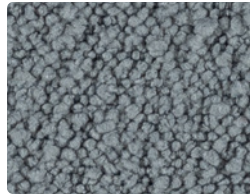
LUDLOW
LD-023 Opal



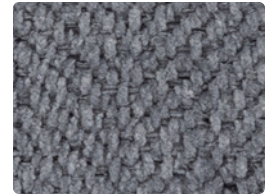
RYDER
RY-026 Zinc



LUDLOW
LD-034 Isle



RITZI
401-043 Opal



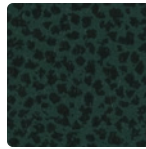
ADLER
640-004 Iceberg



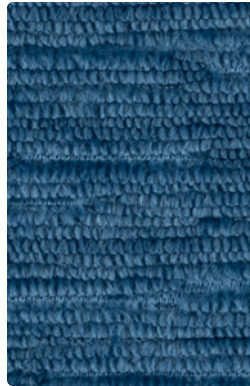
LUDLOW
LD-003 Willow



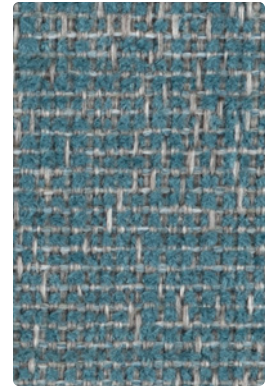
RYDER
RY-013 Herb



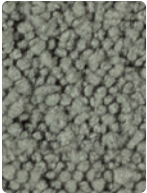
LUDLOW
LD-013 Hunter



SANCTUARY
643-014 Riptide



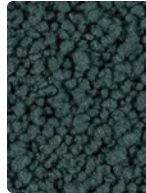
SEVILLE
642-014 Sea



RITZI
401-013 Thyme



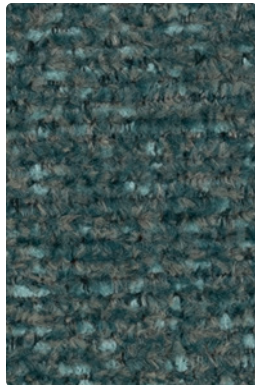
LANCASTER
332-003 Olive



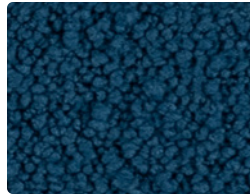
RITZI
401-003 Aloe



SANCTUARY
643-003 Palmetto



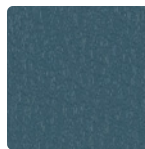
PORTER
WC980-003 Eucalyptus



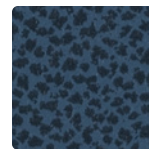
RITZI
401-014 Ocean



ADLER
640-014 Lake



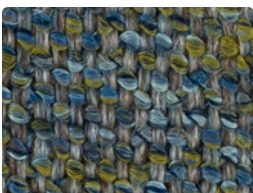
RYDER
RY-014 Aegean



LUDLOW
LD-024 Persian



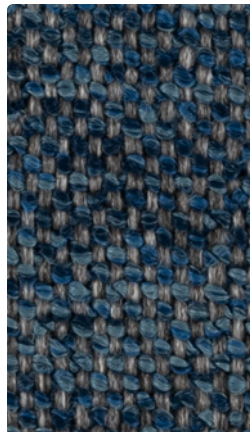
RYDER
RY-004 Deep Sea



LANCASTER
332-014 Ocean



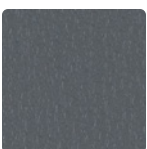
SANCTUARY
643-004 Atlantis



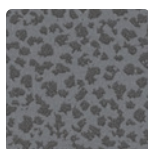
LANCASTER
332-024 Denim



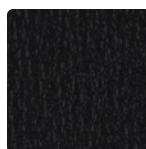
PORTER
WC980-004 Ink



RYDER
RY-046 Shark Fin



LUDLOW
LD-036 Boulder



RYDER
RY-006 Black

Additional colors are available. Please refer to the Mayer Fabrics website.

TECHNICAL INFORMATION

Performance Value Coordinates

Pattern 54 ¹	Content and Backing	Certifications	Weight/ Linear Yd.	Pattern Repeat	Finish	Abrasion Wyzenbeek	Light- Fastness	Flammability	Cleaning Code
ADLER <i>Directional Railroaded</i>	100% Polyester Backing: Polyester	GREENGUARD Gold	16.5 oz.	0.625" H, 1.875" V	Stain Repellent - PFAS Free	60,000 [^] Double Rubs	40 hours	Cal. 117-2013 NFPA 260/UFAC Class 1	S
LANCASTER <i>Directional</i>	97% Solution-Dyed Olefin, 3% Solution-Dyed Polyester Backing: Acrylic	GREENGUARD Gold	21.9 oz.	0.188" H, 0.188" V	Inherently Cleanable	50,000 [^] Double Rubs	40 hours	Cal. 117-2013 NFPA 260/UFAC Class 1	WS, BC, IC
LUDLOW	70% Vinyl - Phthalate Free face, 30% Polyester backing	GREENGUARD Gold	32 oz.	None	Soil & Stain Resistant Top Coat	250,000 [^]	300 hours	Cal. 117-2013 NFPA 260/UFAC Class 1	WS, BC, CFC
PORTER <i>Directional</i>	100% Polyester Backing: Crypton [®] Moisture Barrier	GREENGUARD Gold	18.29 oz.	None	Crypton [®]	100,000 [^]	40 hours	Cal. 117-2013 NFPA 260/UFAC Class 1	W, C, BC
RITZI	94% Polyester, 4% TPU, 2% Silicone Backing: Fluid Barrier (Supreen) Polyurethane	GREENGUARD Gold	18 oz.	None	Supreen (Silicone) PFAS Free	100,000 [^] Double Rubs	40 hours	Cal. 117-2013 NFPA 260/UFAC Class 1	WS, BC
RYDER	88% Vinyl - Phthalate Free face, 12% Polyester backing		30 oz.	None	Soil & Stain Resistant Top Coat	500,000 [^] Double Rubs	200 hours	Cal. 117-2013 NFPA 260/UFAC Class 1 FMVSS 302	WS, BC, CFC
SANCTUARY <i>Directional</i>	100% Polyester Backing: Acrylic	GREENGUARD Gold	20.19 oz.	Random Match	Nanotex [®] by Crypton [®]	100,000 [^] Double Rubs	40 hours	Cal. 117-2013 NFPA 260/UFAC Class 1	W, C, BC
SEVILLE <i>Directional</i>	67% Solution-Dyed Olefin, 33% Solution-Dyed Polyester Backing: Acrylic	GREENGUARD Gold	12.5 oz.	None	Inherently Cleanable	50,000 [^] Double Rubs	40 hours	Cal. 117-2013 NFPA 260/UFAC Class 1	WS, BC, IC

REDUCED ENVIRONMENTAL IMPACT

These products are GREENGUARD Gold Certified for low chemical and particle emissions to UL standard UL 2818 and may contribute to LEED certification.

No FR Additives No Antimicrobial/Antibacterial Additives PFAS Free

CARE AND CLEANING INFORMATION

S: Solvent W: Water-Based Cleaner WS: Water/Solvent Cleaner IC: Inherently Cleanable

C: Crypton Cleaning CFC: Coated Fabrics Cleaning – Refer to Mayer website for complete cleaning info.

Bleach Cleanable – 1 part bleach, 9 parts water = 10% bleach, 90% water solution. **Do not clean/disinfect fabric for longer than 10 minutes using the 10% bleach solution. Always rinse promptly with clean water after applying the bleach solution. Failure to do so will void any and all warranties.**

DYE TRANSFER DISCLAIMER

Certain clothing and accessory dyes (such as those used on denim jeans) may migrate to lighter colors. This phenomenon is increased by humidity and temperature and is irreversible. Mayer Fabrics will not assume responsibility for dye transfer caused by external contaminants. Please check compatibility when using this product in combination with painted or varnished surfaces.

ADDITIONAL INFORMATION

[^]Abrasion test results exceeding ACT Performance Guidelines are not an indicator of product lifespan. Multiple factors affect fabric durability and appearance retention.

Warranty: Please refer to the Mayer website for warranty information by pattern.

Custom Colors: All patterns can be custom colored. Minimum yardage applies.

Digital Swatch Card Color Matching: Due to color variations on different monitors and color printers, actual swatch colors may vary slightly. Please request a memo sample from Mayer Fabrics to ensure proper color representation.

Complete and current product information available at mayerfabrics.com.



These fabrics meet or exceed these ACT performance guidelines.
Certification Marks owned by ACT

TRINCD ©2025 MF0225

T R I N I T Y

MAYERFABRICS