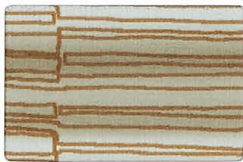


T R I N I T Y



Natural World
NTL 20 Driftwood



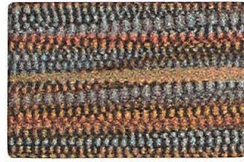
Frequency
FRQ 25 Gingersnap



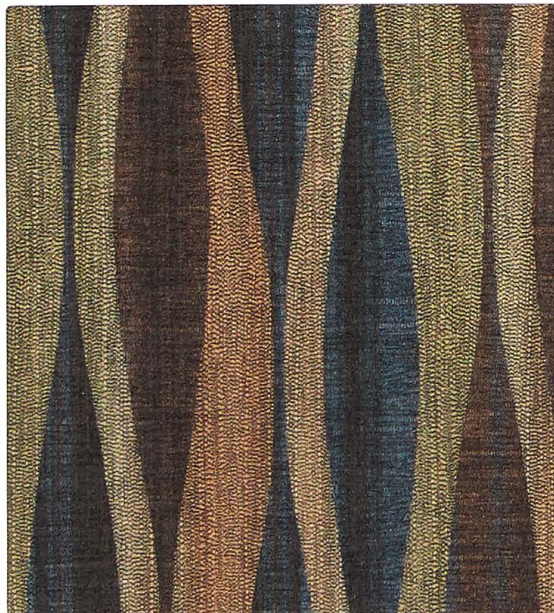
Sentry-HC
SHG 41 Hawk



Tessuto
TES 20 Malta



Ripple
RIP 12 Old Cider



Lava
LAV 12 Stratum



Carlisle
CRL 33 Macadamia



Tessuto
TES 13 Bellini



Criss Cross
CRS 47 Cork



Tessuto
TES 37 Argento



Frequency
FRQ 20 Ionic



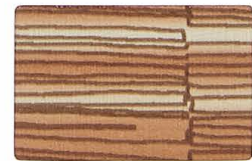
Nishiki
NIH 52 Soba



Martini
MAR 09 Turmeric



Tessuto
TES 25 Mink



Frequency
FRQ 24 Copper



Nishiki
NIH 54 Sumi



Tessuto
TES 28 Marco



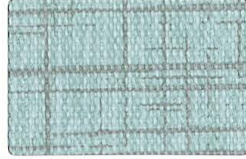
Martini
MAR 08 Gull



Sentry-HC
SHG 32 Armor



Sentry-HC
SHG 42 Channel



Criss Cross
CRS 50 Rain



Nishiki
NIH 66 Peacock



Lava
LAV 13 Stream



Frequency
FRQ 23 Seashore



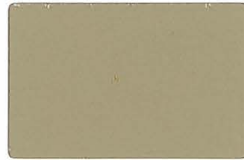
Natural World
NTL 26 Nightshade



Ripple
RIP 11 Silent



Carlisle
CRL 30 Surf



Sentry-HC
SHG 39 Watchtower



Tessuto
TES 22 Lime



Martini
MAR 12 Shore



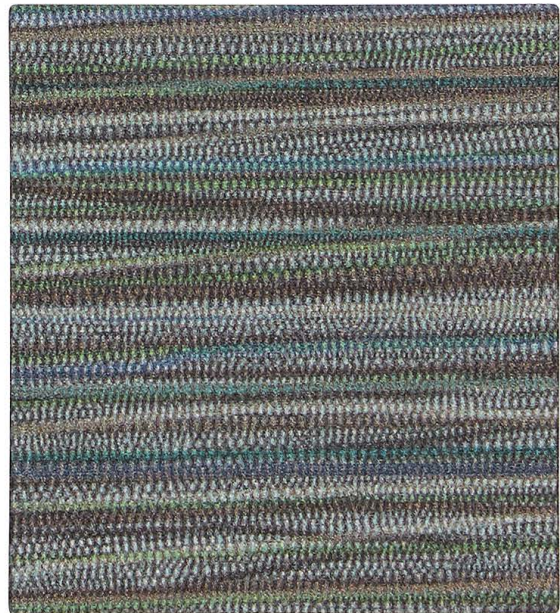
Nishiki
NIH 56 Celadon



Lava
LAV 04 Obsidian



Criss Cross
CRS 45 Mineral



Ripple
RIP 13 Informal Gray

TECHNICAL INFORMATION

Pattern	Grade	Available Colors	Content & Backing	Finish	Abrasion(D.R.)	Lightfastness	Approximate Repeat (H x V)	Cleaning Code
Carlisle	3	8	Vinyl Surface Polyester Backing	Advanced Soil and Stain Resistant Top Coat	1,300,000	600 Hours, Class 5.0	Overall / Directional	W-S Bleach Cleanable 10% Dilution
Criss Cross	3	22	Vinyl Surface Polyester Backing	Advanced Soil and Stain Resistant Top Coat	500,000	600 Hours, Class 4.0	Overall / Directional	W-S Bleach Cleanable 10% Dilution
Frequency	6	10	Vinyl Surface Polyester Backing	Advanced Soil and Stain Resistant Top Coat + Ink Resistance	100,000	1000 Hours, Class 4.5	17.625" x 8.875" Directional	W-S Bleach Cleanable 10% Dilution
Lava	11	14	Vinyl Surface Polyester Backing	Zeron® Protective Finish	100,000	1000 Hours, Class 5.0	9" x 9" Directional	W-S Bleach Cleanable 20% Dilution
Martini	7	12	Vinyl Surface Polyester Backing	Zeron® Protective Finish	100,000	1000 Hours, Class 5.0	Overall / Directional	W-S Bleach Cleanable 20% Dilution
Natural World	8	9	Vinyl Surface Polyester Backing	Advanced Soil and Stain Resistant Top Coat	100,000	1000 Hours, Class 4.5	28.5" x 17.7" Directional	W-S Bleach Cleanable 20% Dilution
Nishiki	4	24	Vinyl Surface Polyester Knit Backing	Advanced Soil and Stain Resistant Top Coat	250,000	300 Hours, Class 4.0	Overall / Directional	W-S Bleach Cleanable 10% Dilution
Ripple	12	6	Vinyl Surface Polyester Backing	Zeron® Protective Finish	100,000	1000 Hours, Class 4.5	54" x 18" Directional	W-S Bleach Cleanable 20% Dilution
Sentry-HC	3	22	Vinyl Surface Polyester Backing	Advanced Soil and Stain Resistant Top Coat	1,300,000	600 Hours, Class 4.0	Overall / Directional	W-S Bleach Cleanable 10% Dilution
Tessuto	4	37	Vinyl Surface Polyester Backing	Advanced Soil and Stain Resistant Top Coat	100,000	1000 Hours, Class 5.0	Overall / Directional	W-S Bleach Cleanable 20% Dilution

All patterns are 54" wide. Dye lots may vary slightly from samples shown.

All patterns meet flammability* requirements of California TB 117-2013, Section 1, UFAC-Class 1, and NFPA 260-Class 1. Some patterns have been tested for other flammability specifications: please visit cfstinson.com for comprehensive results.

These fabrics may contribute to compliance with California Technical Bulletin 133 when used in conjunction with suitable components. California Technical Bulletin 133 is a composite test of complete furniture units.

*This term and any corresponding data refer to the typical performance in the tests indicated and should not be construed to imply the behavior of this or any other material under actual fire conditions.

To view all colorways of these designs and all Stinson patterns, or to order memo samples for specific projects, please visit cfstinson.com.

T R I N I T Y

P.O. Box 150
6089 Kennedy Road
Trinity, NC 27370
T 336.472.6660 F 336.475.0037 TF 855.311.6660
sales@trinityfurniture.com www.trinityfurniture.com

Stinson®

C.F. Stinson, LLC
2849 Product Drive
Rochester Hills, MI 48309

W cfstinson.com
P 800 841 6279
F 248 299 3884