



G780 Armless Side Chair
W 21" D 24" H 33"
SH 18"



G760 Closed Arm Side Chair
W 23" D 24" H 33"
SH 18" AH 26"



G770 Open Arm Side Chair
W 23" D 24" H 33"
SH 18" AH 26"



G861-C Lounge Chair
W 30" D 31" H 33"
SH 18" AH 23"



G862-C Two Place Sofa
W 54" D 31" H 33"
SH 18" AH 23"



G863-C Three Place Sofa
W 78" D 31" H 33"
SH 18" AH 23"

Fabrics

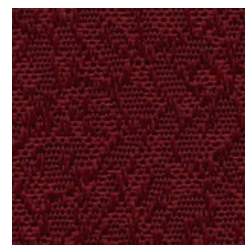
Our 100% nylon jacquard woven fabric is constructed for dependability and includes the perfect color choices for your office environment.



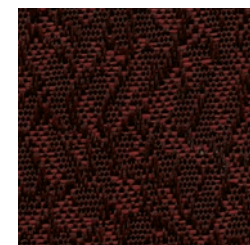
Tan



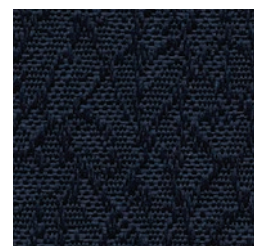
Brown



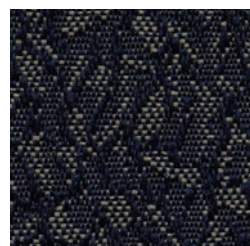
Red



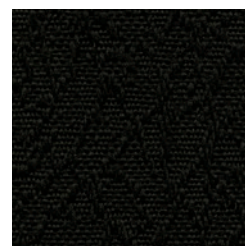
Cordovan



Light Blue



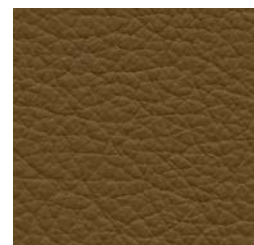
Dark Blue



Black

Leathers / Vinyls

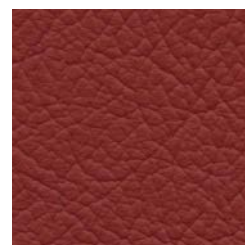
A selection of premier top grain leather is available with color choices that harmonize with our fabric selection. Vinyl upholstery that matches the colors shown is available. Please contact us for details.



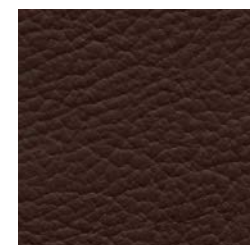
Tan



Brown



Red



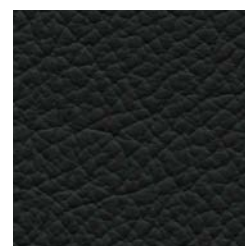
Cordovan



Light Blue



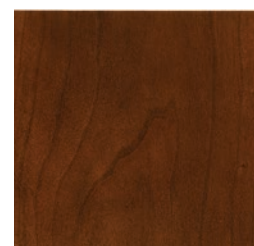
Dark Blue



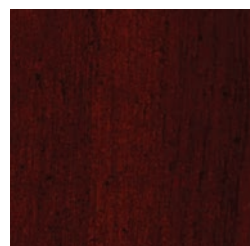
Black

Finishes

All wood finishes are specially formulated with Safe-T-Guard antimicrobial additive to prevent the growth or expansion of mold, mildew, fungus, or bacteria on exposed wood surfaces.



Walnut



Mahogany

 Contract Holder

GSA Contract #: GS-03F-BA014
Expiration Date: 5-31-2019

*Traditional Style
Upholstered Furniture
for use in the
General Services Administration
Special Order Program
Class 7110 Office Furniture*

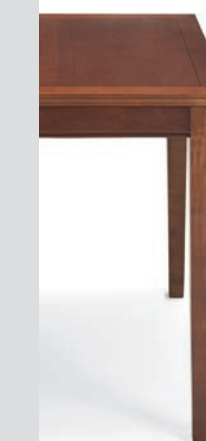
*By authority of the
General Services Administration
Federal Acquisition Service
Integrated Workspace
Acquisition Center
Philadelphia, PA.*

Traditional Style Office Seating

T R I N I T Y
FURNITURE INCORPORATED

T 336.472.6660 F 336.475.0037 TF 855.311.6660
sales@trinityfurniture.com | www.trinityfurniture.com

Traditional
Collection





G501H-4 High Back Executive Chair
W 24" D 31" H 46"-49"
SH 18"-21" AH 26"-29"
Cherry Wood Base
Upholstered Arm
Knee Tilt Swivel With Lock
Pneumatic Seat Height Adjustment



G501-4 Mid Back Executive Chair
W 24" D 30" H 44"-47"
SH 17"-20" AH 25"-28"
Cherry Wood Base
Upholstered Arm
Knee Tilt Swivel With Lock
Pneumatic Seat Height Adjustment



G531-2 Low Back Executive Chair
W 24" D 28" H 36"-39"
SH 17"-20" AH 25"-28"
Cherry Wood Base
Upholstered Arm
Tilt Swivel With Lock
Pneumatic Seat Height Adjustment



G750-1 Armless Task Chair
W 26" D 23" H 34"-39"
SH 18"-23" AH 25"-33"
Cherry Wood Base
Tilt Swivel With Lock
Pneumatic Seat Height Adjustment



G100B Armless Side Chair
W 18" D 22" H 35" SH 18"



G100A Steam Bent Open Arm Side Chair
W 23" D 26" H 37"
SH 18" AH 26"



G400-2 High Back Executive Judges Chair
W 27" D 22" H 48"-52"
SH 19"-22" AH 25"-28"
Cherry Wood Base
Open Upholstered Arm / Wood Arm
Tilt Swivel With Lock
Pneumatic Seat Height Adjustment



G200-2 Rotary Chair
W 26" D 28" H 43"-46"
SH 18"-21" AH 26"-28"
Cherry Wood Base
Open Upholstered Arm / Wood Arm
Tilt Swivel With Lock
Pneumatic Seat Height Adjustment



G730-3 High Back Managerial Chair With Arms
W 26" D 28" H 36"-39"
SH 18"-21" AH 26"-28"
Cherry Wood Base
Urethane Adjustable Arm
Tilt Swivel With Lock
Pneumatic Seat Height Adjustment



G7020 End Table
W 20" D 24" H 23"



G7024 End Table
W 24" D 24" H 23"



G7030 Coffee Table
W 30" D 30" H 18"



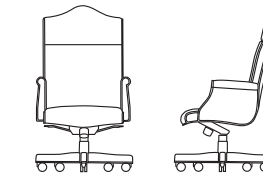
G7042 Coffee Table
W 42" D 20" H 18"



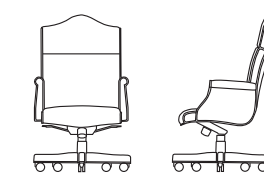
G7048 Sofa Table
W 48" D 18" H 30"

Product Styles:

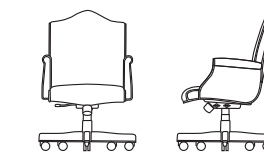
Executive Chairs



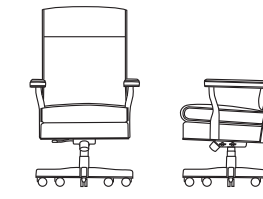
G501H-4 High Back



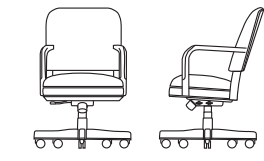
G501-4 Mid Back



G531-2 Low Back

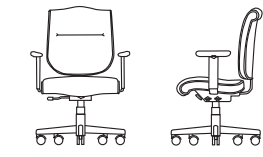


G400-2 High Back Judges

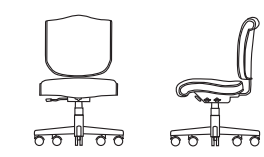


G200-2 Rotary

Managerial Chair / Office Task Chair

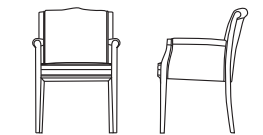


G730-3 High Back

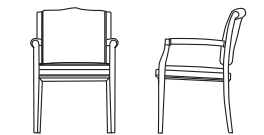


G750-1 Low Back

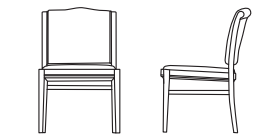
Side Chairs / Straight Chairs



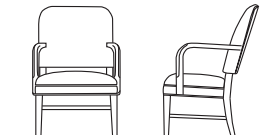
G760 Open Arm



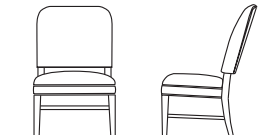
G770 Closed Arm



G780 Armless

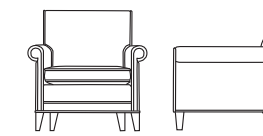


G100A Open Arm

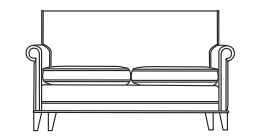


G100B Armless

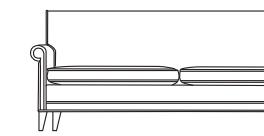
Lounge



G861-C Lounge Chair



G862-C Two Place Sofa

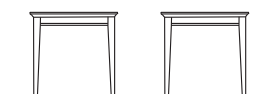


G863-C Three Place Sofa

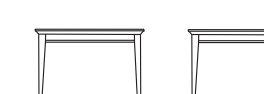
Tables



G7020 End Table



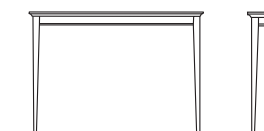
G7024 End Table



G7030 Coffee Table



G7042 Coffee Table



G7048 Sofa Table

Traditional Collection



TRINITY FURNITURE
IS A SMALL MINORITY
OWNED BUSINESS
FORMERLY 8A CERTIFIED
BY THE SBA



*Traditional Style
Upholstered Furniture
for use in the
General Services Administration
Special Order Program
Class 7110 Office Furniture*

*By authority of the
General Services Administration
Federal Acquisition Service
Integrated Workspace
Acquisition Center
Philadelphia, PA.*

Traditional Style Office Seating

ORDERING INFORMATION

GSA Global Supply accepts your government purchase card or direct billing through your Activity Address Code (AAC) or DoDAAC. For information on obtaining an AAC or DoDAAC, contact our Order Management Office at (800) 927-7622 or ordermgmt@gsa.gov.

Online: www.GSAGlobalsupply.gsa.gov
Available 24/7, the GSA Global Supply website gives you access to hundreds of thousands of tools, office supplies, computer products, furniture and other items.

Telephone: (800) 525-8027 | DSN 465-1416
Available 7:30 a.m. to 8 p.m. (ET), Monday through Friday.

Fax Orders: (800) 856-7057
Available 24/7. You will receive order confirmation via fax.

FEDSTRIP/MILSTRIP:

We're integrated with orders routed from DLA Transaction Services. We're also happy to accept your Standard Form 344 or DD Form 1348 by mail at:

GSA Global Supply (QSDLBB)
Room 6A00
819 Taylor St.
Fort Worth, TX 76102

Please ensure that a contact person and a commercial telephone number accompany all orders to expedite any necessary clarification. The office cannot return DSN or Autovon calls. For FEDSTRIP/MILSTRIP orders, please enter the name and phone number in the "Mark For" section of your requisition. Please be sure to include a supplemental address if the signal code (Block 51 of Standard Form 344) is anything other than "A". Please also verify that your supplemental address is accurate and includes a telephone number and/or point of contact if possible.

Additional Ordering Options:

GSAAdvantage!®: www.gsaadvantage.gov
Available 24 hours a day, seven days a week. The same user ID and password can be used on both the GSA Global Supply website and GSAAdvantage! The contractor field will indicate "GSA Global Supply."

DOD EMALL:

Available 24/7. All GSA Global Supply items appear on the Defense Logistics Agency's DOD EMALL site. Customer must use their DoDAAC to purchase GSA items. The supplier field will indicate "GSA MILSTRIP" if the product is offered by GSA Global Supply.

Contract Prices:

Please refer to www.globalsupply.gsa.gov for the most current pricing.

Delivery Conditions:

The standard delivery time is 90 days or less after receipt of order (ARO).

Certain items noted in this catalog are available in 30 days ARO, if marked as QuickShip. To specify QuickShip, make sure the priority code on the requisition is 01,02,03,04,05,06,07 or 08. These priorities will insure you receive QuickShip on those items on which it is offered.

Delivery Zones

Prices listed include delivery to the geographic zones specified below:

Zone 1 – Alabama, Connecticut, Delaware, District of Columbia, Florida, Georgia, Kentucky, Maine, Maryland, Massachusetts, Mississippi, New Hampshire, New Jersey, New York, North Carolina, Pennsylvania, Rhode Island, South Carolina, Tennessee, Vermont, Virginia and West Virginia.

Zone 2 – Arkansas, Illinois, Indiana, Iowa, Kansas, Louisiana, Michigan, Minnesota, Missouri, Nebraska, New Mexico, Ohio, Oklahoma, Texas and Wisconsin.

Zone 3 – Arizona, California, Colorado, Idaho, Montana, Nevada, North Dakota, South Dakota, Utah, Oregon, Washington and Wyoming.

NOTE: Deliveries to Hawaii and Alaska are prepaid to the port of exit only.

Inside Delivery

If requested, ordering activities must specify inside delivery in the remarks/exception data of the requisition and use Document Identifier AOE (for domestic) or AO5 (for export) as applicable. The name and telephone number of the point of contact must be included on the requisition.

In addition, indicate the exact location to which the delivery is to be made. The inside delivery rates specified below are in effect for delivery within a consignee's premises when the building and elevator will accommodate the items being delivered. The inside delivery rates will be negotiated between the contractor and the ordering agency in those instances when the building and elevator within a consignee's premises will not accommodate the items.

Installation:

Unpacking, assembly and carton removal must be specified at the time the order is placed, not at the time of delivery. To specify installation requirements, please use an AOE or AO5 document. On each delivery order, list a minimum of two-contact points and telephone numbers for coordination and delivery. Charges for additional services are negotiable between Trinity Furniture, GSA and the ordering agency. Contact Trinity Furniture direct to arrange for these services (336) 472-6660.


Warranty:


Trinity Furniture warrants all products for two (2) years against manufacturing and factory defects, excluding covering materials, under normal single shift service for original purchaser. During this period Trinity Furniture, at our option, will replace, repair or return the purchase price of any merchandise that, upon our inspection, is deemed to be defective. This constitutes the sole and exclusive remedy to the customer. Damages resulting from freight, claimed or unclaimed, from accident, alteration, tampering, misuse, negligence, or abuse voids this warranty. In the event any product has to be returned to the factory for verification of a complaint, it must be shipped prepaid and include written information containing the name of the original purchaser, original invoice number, and a copy of the original purchase order must be provided. Because of natural variations on materials over which Trinity Furniture, Inc has no control, this warranty does not extend to color, grain or texture of wood, leather or upholstery cover. This warranty is applicable only to those parts actually manufactured by Trinity Furniture. For purchased component parts, we will apply exactly the same warranty that is extended to us by our supplier. Trinity Furniture shall not be liable for consequential or incidental damages arising from any product defect.


Resolution of Problems with Orders:


The GSA National Customer Service Center (NCSC) is the point to which all discrepancy reports (as well as quality deficiency reports) should be addressed for processing:


GSA National Customer Service Center (6FR)
1500 East Bannister Road
Kansas City, MO 64131
Toll-Free Phone: (800) 488-3111
DSN: 465-1416


Item #	Description	Color	Walnut	Mahogany	Zone 1	Zone 2	Zone 3
G501H-4	High Back Executive Chair TYPE I, STYLE 1, CLASS 1	Cordovan Leather	7110-01-622-0455	7110-01-622-1768	\$976.63	\$982.50	\$1011.82
		Dark Blue Leather	7110-01-622-1765	7110-01-622-1769			
		Brown Leather	7110-01-622-1766	7110-01-622-1770			
		Black Leather	7110-01-622-1767	7110-01-622-1811			
							
	TYPE I, STYLE 1, CLASS 2	Cordovan Vinyl	7110-01-622-1761	7110-01-622-3769	\$719.11	\$724.97	\$754.30
		Dark Blue Vinyl	7110-01-622-1760	7110-01-622-2876			
		Brown Vinyl	7110-01-622-1762	7110-01-622-3771			
		Black Vinyl	7110-01-622-2868	7110-01-622-3773			
	TYPE I, STYLE 1, CLASS 3	Cordovan Fabric	7110-01-622-2841	7110-01-622-3779	\$711.79	\$717.65	\$746.98
		Dark Blue Fabric	7110-01-622-2842	7110-01-622-2852			
		Brown Fabric	7110-01-622-2845	7110-01-622-3781			
		Black Fabric	7110-01-622-2848	7110-01-622-3785			


Item #	Description	Color	Walnut	Mahogany	Zone 1	Zone 2	Zone 3
G501-4	Mid Back Executive Chair TYPE I, STYLE 2, CLASS 1	Cordovan Leather	7110-01-622-2844	7110-01-622-3786	\$926.40	\$932.26	\$961.59
		Dark Blue Leather	7110-01-622-2847	7110-01-622-2856			
		Brown Leather	7110-01-622-2850	7110-01-622-3787			
		Black Leather	7110-01-622-2854	7110-01-622-3789			
							
	TYPE I, STYLE 2, CLASS 2	Cordovan Vinyl	7110-01-622-2857	7110-01-622-3790	\$702.07	\$707.94	\$737.27
		Dark Blue Vinyl	7110-01-622-2858	7110-01-622-2872			
		Brown Vinyl	7110-01-622-2861	7110-01-622-3791			
		Black Vinyl	7110-01-622-2865	7110-01-622-3792			
	TYPE I, STYLE 2, CLASS 3	Cordovan Fabric	7110-01-622-2829	7110-01-622-3793	\$695.79	\$701.65	\$730.98
		Dark Blue Fabric	7110-01-622-2831	7110-01-622-2837			
		Brown Fabric	7110-01-622-2832	7110-01-622-3775			
		Black Fabric	7110-01-622-2833	7110-01-622-3776			


Item #	Description	Color	Walnut	Mahogany	Zone 1	Zone 2	Zone 3
G531-2	Low Back Executive Chair TYPE I, STYLE 3, CLASS 1	Cordovan Leather	7110-01-622-2834	7110-01-622-3777	\$805.19	\$808.12	\$822.79
		Dark Blue Leather	7110-01-622-2836	7110-01-622-2835			
		Brown Leather	7110-01-622-2838	7110-01-622-3778			
		Black Leather	7110-01-622-2830	7110-01-622-3780			
							
	TYPE I, STYLE 3, CLASS 2	Cordovan Vinyl	7110-01-622-2839	7110-01-622-2849	\$588.48	\$591.41	\$606.08
		Dark Blue Vinyl	7110-01-622-2840	7110-01-622-2851			
		Brown Vinyl	7110-01-622-2843	7110-01-622-2853			
		Black Vinyl	7110-01-622-2846	7110-01-622-2855			
	TYPE I, STYLE 3, CLASS 3	Cordovan Fabric	7110-01-622-2859	7110-01-622-2870	\$582.21	\$585.14	\$599.80
		Dark Blue Fabric	7110-01-622-2860	7110-01-622-2862			
		Brown Fabric	7110-01-622-2864	7110-01-622-2863			
		Black Fabric	7110-01-622-2867	7110-01-622-2866			


Item #	Description	Color	Walnut	Mahogany	Zone 1	Zone 2	Zone 3	
G400-2	High Back Executive Judges Chair TYPE I, STYLE 4, CLASS 1	Cordovan Leather	7110-01-622-2869	7110-01-622-3269	\$1098.82	\$1104.69	\$1139.88	
		Dark Blue Leather	7110-01-622-2871	7110-01-622-3274				
		Brown Leather	7110-01-622-2874	7110-01-622-3273				
		Black Leather	7110-01-622-2875	7110-01-622-3279				
								
		TYPE I, STYLE 4, CLASS 2	Cordovan Vinyl	7110-01-622-3283	7110-01-622-3287	\$845.93	\$851.80	\$886.99
		Dark Blue Vinyl	7110-01-622-3275	7110-01-622-3290				
		Brown Vinyl	7110-01-622-3280	7110-01-622-3295				
	TYPE I, STYLE 4, CLASS 3	Black Vinyl	7110-01-622-3284	7110-01-622-3300				
		Cordovan Fabric	7110-01-622-3305	7110-01-622-3301	\$838.72	\$844.58	\$879.78	
		Dark Blue Fabric	7110-01-622-3293	7110-01-622-3307				
		Brown Fabric	7110-01-622-3296	7110-01-622-3309				
		Black Fabric	7110-01-622-3299	7110-01-622-3315				


Item #	Description	Color	Walnut	Mahogany	Zone 1	Zone 2	Zone 3	
G200-2	Rotary Chair w/ Star Base TYPE I, STYLE 5, CLASS 1	Cordovan Leather	7110-01-622-3318	7110-01-622-3317	\$749.15	\$755.02	\$784.34	
		Dark Blue Leather	7110-01-622-3304	7110-01-622-3320				
		Brown Leather	7110-01-622-3311	7110-01-622-3294				
		Black Leather	7110-01-622-3313	7110-01-622-3297				
								
		TYPE I, STYLE 5, CLASS 2	Cordovan Vinyl	7110-01-622-3298	7110-01-622-3316	\$621.34	\$627.19	\$656.53
		Dark Blue Vinyl	7110-01-622-3303	7110-01-622-3319				
		Brown Vinyl	7110-01-622-3308	7110-01-622-3306				
		Black Vinyl	7110-01-622-3310	7110-01-622-3312				


Item #	Description	Color	Walnut	Mahogany	Zone 1	Zone 2	Zone 3	
G730-3	High Back Managerial Chair TYPE II, STYLE 1, CLASS 1	Cordovan Leather	7110-01-622-3314	7110-01-622-4237	\$858.16	\$864.02	\$893.35	
		Dark Blue Leather	7110-01-622-3321	7110-01-622-3333				
		Brown Leather	7110-01-622-3323	7110-01-622-4240				
		Black Leather	7110-01-622-3327	7110-01-622-4242				
								
		TYPE II, STYLE 1, CLASS 2	Cordovan Vinyl	7110-01-622-3340	7110-01-622-4244	\$666.89	\$672.76	\$702.09
		Dark Blue Vinyl	7110-01-622-3324	7110-01-622-3179				
		Brown Vinyl	7110-01-622-3328	7110-01-622-4247				
	TYPE II, STYLE 1, CLASS 3	Black Vinyl	7110-01-622-3174	7110-01-622-4250				
		Cordovan Fabric	7110-01-622-3177	7110-01-622-4255	\$661.16	\$667.02	\$696.35	
		Dark Blue Fabric	7110-01-622-3180	7110-01-622-3194				
		Brown Fabric	7110-01-622-3182	7110-01-622-4253				
		Black Fabric	7110-01-622-3184	7110-01-622-4246				


Item #	Description	Color	Walnut	Mahogany	Zone 1	Zone 2	Zone 3
G750-1	Armless Task Chair TYPE II, STYLE 2, CLASS 1 	Cordovan Leather	7110-01-622-3191	7110-01-622-3190	\$725.92	\$731.79	\$761.12
		Dark Blue Leather	7110-01-622-3195	7110-01-622-3199			
		Brown Leather	7110-01-622-3202	7110-01-622-3206			
		Black Leather	7110-01-622-3187	7110-01-622-3208			
	TYPE II, STYLE 2, CLASS 2	Cordovan Vinyl	7110-01-622-3262	7110-01-622-3277	\$585.42	\$591.29	\$620.61
		Dark Blue Vinyl	7110-01-622-3266	7110-01-622-3291			
		Brown Vinyl	7110-01-622-3267	7110-01-622-3263			
	TYPE II, STYLE 2, CLASS 3	Cordovan Fabric	7110-01-622-3268	7110-01-622-3281	\$581.30	\$587.17	\$616.50
		Dark Blue Fabric	7110-01-622-3265	7110-01-622-3286			
		Brown Fabric	7110-01-622-3271	7110-01-622-3288			
		Black Fabric	7110-01-622-3276	7110-01-622-3278			


Item #	Description	Color	Walnut	Mahogany	Zone 1	Zone 2	Zone 3
G760	Closed Arm Side Chair TYPE III, STYLE 1, CLASS 1 	Cordovan Leather	7110-01-622-3282	7110-01-622-4245	\$665.33	\$668.26	\$682.93
		Dark Blue Leather	7110-01-622-3285	7110-01-622-3302			
		Brown Leather	7110-01-622-3289	7110-01-622-4252			
		Black Leather	7110-01-622-3292	7110-01-622-4257			
	TYPE III, STYLE 1, CLASS 2	Cordovan Vinyl	7110-01-622-3383	7110-01-622-4258	\$486.78	\$489.72	\$504.38
		Dark Blue Vinyl	7110-01-622-3377	7110-01-622-3382			
		Brown Vinyl	7110-01-622-3379	7110-01-622-4259			
	TYPE III, STYLE 1, CLASS 3	Cordovan Fabric	7110-01-622-3384	7110-01-622-4266	\$481.58	\$484.51	\$499.17
		Dark Blue Fabric	7110-01-622-3385	7110-01-622-3387			
		Brown Fabric	7110-01-622-3386	7110-01-622-4260			
		Black Fabric	7110-01-622-3783	7110-01-622-4261			


Item #	Description	Color	Walnut	Mahogany	Zone 1	Zone 2	Zone 3
G770	Open Arm Side Chair TYPE III, STYLE 2, CLASS 1 	Cordovan Leather	7110-01-622-3388	7110-01-622-4262	\$607.90	\$610.83	\$625.49
		Dark Blue Leather	7110-01-622-3389	7110-01-622-3392			
		Brown Leather	7110-01-622-3390	7110-01-622-4264			
		Black Leather	7110-01-622-3391	7110-01-622-4265			
	TYPE III, STYLE 2, CLASS 2	Cordovan Vinyl	7110-01-622-3207	7110-01-622-4203	\$449.24	\$452.18	\$466.84
		Dark Blue Vinyl	7110-01-622-3213	7110-01-622-3217			
		Brown Vinyl	7110-01-622-3210	7110-01-622-4200			
	TYPE III, STYLE 2, CLASS 3	Cordovan Fabric	7110-01-622-3225	7110-01-622-4205	\$444.55	\$447.48	\$462.15
		Dark Blue Fabric	7110-01-622-3229	7110-01-622-3223			
		Brown Fabric	7110-01-622-3218	7110-01-622-4204			
		Black Fabric	7110-01-622-3221	7110-01-622-4209			


Item #	Description	Color	Walnut	Mahogany	Zone 1	Zone 2	Zone 3	
G780	Armless Side Chair TYPE III, STYLE 3, CLASS 1	Cordovan Leather	7110-01-622-3227	7110-01-622-4213	\$533.17	\$536.10	\$550.77	
		Dark Blue Leather	7110-01-622-3231	7110-01-622-3242				
		Brown Leather	7110-01-622-3235	7110-01-622-4220				
		Black Leather	7110-01-622-3238	7110-01-622-4201				
		TYPE III, STYLE 3, CLASS 2	Cordovan Vinyl	7110-01-622-3175	7110-01-622-4206	\$378.85	\$381.78	\$396.44
			Dark Blue Vinyl	7110-01-622-4207	7110-01-622-3176			
			Brown Vinyl	7110-01-622-3178	7110-01-622-4212			
			Black Vinyl	7110-01-622-3181	7110-01-622-4214			
	TYPE III, STYLE 3, CLASS 3	Cordovan Fabric	Dark Blue Fabric	7110-01-622-3183	7110-01-622-4215	\$374.15	\$377.09	\$391.75
			Dark Blue Fabric	7110-01-622-3185	7110-01-622-3186			
			Brown Fabric	7110-01-622-3188	7110-01-622-4218			
			Black Fabric	7110-01-622-3192	7110-01-622-4223			






Item #	Description	Color	Walnut	Mahogany	Zone 1	Zone 2	Zone 3	
G100A	Steam Bent Open Arm Side Chair TYPE III, STYLE 4, CLASS 1	Cordovan Leather	7110-01-622-3200	7110-01-622-4225	\$520.92	\$523.85	\$538.52	
		Dark Blue Leather	7110-01-622-3189	7110-01-622-3203				
		Brown Leather	7110-01-622-3193	7110-01-622-3211				
		Black Leather	7110-01-622-3197	7110-01-622-3198				
		TYPE III, STYLE 4, CLASS 2	Cordovan Vinyl	7110-01-622-3232	7110-01-622-3248	\$430.54	\$433.48	\$448.14
			Dark Blue Vinyl	7110-01-622-3237	7110-01-622-3249			
			Brown Vinyl	7110-01-622-3240	7110-01-622-3251			
			Black Vinyl	7110-01-622-3244	7110-01-622-3256			
	TYPE III, STYLE 4, CLASS 3	Cordovan Fabric	Dark Blue Fabric	7110-01-622-3258	7110-01-622-3252	\$427.98	\$430.91	\$445.57
			Dark Blue Fabric	7110-01-622-3241	7110-01-622-3253			
			Brown Fabric	7110-01-622-3245	7110-01-622-3257			
			Black Fabric	7110-01-622-3247	7110-01-622-3260			

Item #	Description	Color	Walnut	Mahogany	Zone 1	Zone 2	Zone 3	
G100B	Armless Side Chair TYPE III, STYLE 5, CLASS 1	Cordovan Leather	7110-01-622-3261	7110-01-622-3259	\$410.02	\$412.95	\$427.61	
		Dark Blue Leather	7110-01-622-3270	7110-01-622-3196				
		Brown Leather	7110-01-622-3254	7110-01-622-3201				
		Black Leather	7110-01-622-3255	7110-01-622-3205				
		TYPE III, STYLE 5, CLASS 2	Cordovan Vinyl	7110-01-622-3212	7110-01-622-3216	\$320.35	\$323.29	\$337.95
			Dark Blue Vinyl	7110-01-622-3204	7110-01-622-3220			
			Brown Vinyl	7110-01-622-3209	7110-01-622-3224			
			Black Vinyl	7110-01-622-3214	7110-01-622-3228			
	TYPE III, STYLE 5, CLASS 3	Cordovan Fabric	Dark Blue Fabric	7110-01-622-3233	7110-01-622-3230	\$317.77	\$320.71	\$335.37
			Dark Blue Fabric	7110-01-622-3219	7110-01-622-3234			
			Brown Fabric	7110-01-622-3222	7110-01-622-3236			
			Black Fabric	7110-01-622-3226	7110-01-622-3239			

Item #	Description	Color	Walnut	Mahogany	Zone 1	Zone 2	Zone 3
G861-C	Lounge Chair TYPE V, STYLE 1, CLASS 1	Cordovan Leather	7110-01-622-3365	7110-01-622-4671	\$999.86	\$1005.72	\$1035.05
		Dark Blue Leather	7110-01-622-3366	7110-01-622-3784			
		Brown Leather	7110-01-622-3371	7110-01-622-4654			
		Black Leather	7110-01-622-3372	7110-01-622-4656			
							
	TYPE V, STYLE 1, CLASS 2	Cordovan Vinyl	7110-01-622-3730	7110-01-622-4657	\$647.83	\$653.69	\$683.02
		Dark Blue Vinyl	7110-01-622-3732	7110-01-622-3741			
		Brown Vinyl	7110-01-622-3736	7110-01-622-5469			
		Black Vinyl	7110-01-622-3737	7110-01-622-4655			
	TYPE V, STYLE 1, CLASS 3	Cordovan Fabric	7110-01-622-3752	7110-01-622-4661	\$637.40	\$643.27	\$672.59
		Dark Blue Fabric	7110-01-622-3759	7110-01-622-3772			
		Brown Fabric	7110-01-622-3764	7110-01-622-4659			
		Black Fabric	7110-01-622-3767	7110-01-622-4662			

Item #	Description	Color	Walnut	Mahogany	Zone 1	Zone 2	Zone 3
G862-C	Two Place Sofa TYPE V, STYLE 2, CLASS 1	Cordovan Leather	7110-01-622-3726	7110-01-622-3755	\$1351.99	\$1357.86	\$1387.19
		Dark Blue Leather	7110-01-622-3740	7110-01-622-3763			
		Brown Leather	7110-01-622-3747	7110-01-622-4666			
		Black Leather	7110-01-622-3750	7110-01-622-4667			
							
	TYPE V, STYLE 2, CLASS 2	Cordovan Vinyl	7110-01-622-3722	7110-01-622-3695	\$846.11	\$851.97	\$881.30
		Dark Blue Vinyl	7110-01-622-3690	7110-01-622-3700			
		Brown Vinyl	7110-01-622-3692	7110-01-622-3703			
		Black Vinyl	7110-01-622-3693	7110-01-622-3710			
	TYPE V, STYLE 2, CLASS 3	Cordovan Fabric	7110-01-622-3709	7110-01-622-4658	\$830.99	\$836.85	\$866.18
		Dark Blue Fabric	7110-01-622-3712	7110-01-622-3724			
		Brown Fabric	7110-01-622-3718	7110-01-622-4660			
		Black Fabric	7110-01-622-3721	7110-01-622-4663			

Item #	Description	Color	Walnut	Mahogany	Zone 1	Zone 2	Zone 3
G863-C	Three Place Sofa TYPE V, STYLE 3, CLASS 1	Cordovan Leather	7110-01-622-3743	7110-01-622-3731	\$1680.58	\$1686.45	\$1715.77
		Dark Blue Leather	7110-01-622-3746	7110-01-622-3734			
		Brown Leather	7110-01-622-3751	7110-01-622-3735			
		Black Leather	7110-01-622-3729	7110-01-622-3739			
							
	TYPE V, STYLE 3, CLASS 2	Cordovan Vinyl	7110-01-622-3686	7110-01-622-1137	\$1003.68	\$1009.55	\$1038.88
		Dark Blue Vinyl	7110-01-622-3701	7110-01-622-3687			
		Brown Vinyl	7110-01-622-3672	7110-01-622-3702			
		Black Vinyl	7110-01-622-3681	7110-01-622-3707			
	TYPE V, STYLE 3, CLASS 3	Cordovan Fabric	7110-01-622-3715	7110-01-622-3691	\$983.35	\$989.22	\$1018.55
		Dark Blue Fabric	7110-01-622-3716	7110-01-622-3694			
		Brown Fabric	7110-01-622-3720	7110-01-622-3696			
		Black Fabric	7110-01-622-3688	7110-01-622-3697			

Item #	Description	Color	Walnut	Mahogany	Zone 1	Zone 2	Zone 3
G7020	End Table TYPE VI, STYLE 1		7110-01-622-3704	7110-01-622-3706	\$375.73	\$381.59	\$416.78
							
G7024	Corner Table TYPE VI, STYLE 2		7110-01-622-3708	7110-01-622-3711	\$421.82	\$427.68	\$462.88
							
G7030	Coffee Table, Square TYPE VI, STYLE 3		7110-01-622-3713	7110-01-622-3717	\$464.73	\$470.60	\$505.79
							
G7042	Coffee Table, Rectangle TYPE VI, STYLE 4		7110-01-622-3719	7110-01-622-3723	\$438.23	\$444.09	\$479.29
							
G7048	Sofa Table TYPE VI, STYLE 5		7110-01-622-3725	7110-01-622-3733	\$537.79	\$543.66	\$578.85
							

QUICKSHIP: 7% OF ZONE PRICING

T R I N I T Y

FURNITURE INCORPORATED

PO BOX 150

TRINITY, NC 27370

PHONE 336-472-6660

FACSIMILE 336-475-0037

TOLL FREE 855-311-6660

E-MAIL sales@trinityfurniture.com

INTERNET www.trinityfurniture.com

FEDERAL ID 56-1414163

DUNN # 11-598-8651

CAGE CODE 3Z744

