

Austen

GUEST / TANDEM / TABLES

Effective: March 1, 2025

T R I N I T Y

Date:

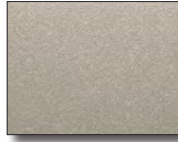
Page:

Modification:

Description:

DESCRIPTION:

- Upholstery Frames: Steel, Plywood & Hardwood
- Seat: High Density Polyurethane Foam Over Strap Webbing
- Back: High Density Polyurethane Foam Over Plywood
- Upholstered Covers: Stapled On Seat & Back
- Urethane Arm Caps - Standard
- Exposed Metal Legs: 14 Gauge Steel Tubing / Powder Coated (Wallsaver Back Legs)
- Leather Upholstery Not Available
- Adjustable Height Leveling Glides Standard
- 10 Year Warranty



Leg Color: Champagne

OPTIONS:

- EPAC-1 Black Polyester Arm Caps (Set Of 2).....\$374
- AWAC-1 Wood Arm Caps (Set Of 2).....No Upcharge
- SSAC-2 Solid Surface Arm Caps (Set Of 2).....\$737
- RUC-G Removable Upholstery Covers \$100 Chair
- CC Contrasting Covers.....\$129

All Austen Components Are Field Replaceable.

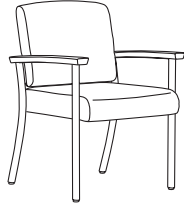
NOTE: All Seating Configurations Are Viewed From Left To Right Facing. Please Attach A Layout Showing Seating Configuration w/ Your Order. Assembled Units Must Be Shipped In Configurations Of 3 Or Less.

GUEST / TANDEM

ITEM #:

SPECIFICATIONS | GRADES | LIST PRICES:

ARM SIDE CHAIR / URETHANE ARMS



1922: 20" Seat Width
1924: 24" Seat Width

1922

Overall: 23.25"w 25.5"d 34"h		Arm: 25"h		COM: 1.75 yds.									
Seat: 20"w 18.25"d 18.5"h		Weight: 45 lbs.		COL: n/a									
COM	COL	1	2	3	4	5	6	7	8	9	10	L1	L2
1049	N/A	1070	1091	1121	1152	1183	1213	1244	1274	1305	1335	N/A	N/A

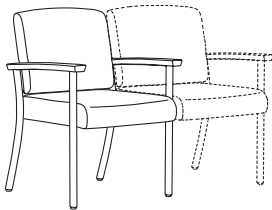
Open Back / Tight Seat & Back / 20" Seat Width / 350 lb. Weight Capacity

1924

Overall: 27.25"w 25.5"d 34"h		Arm: 25"h		COM: 2 yds.									
Seat: 24"w 18.25"d 18.5"h		Weight: 50 lbs.		COL: n/a									
COM	COL	1	2	3	4	5	6	7	8	9	10	L1	L2
1408	N/A	1449	1495	1552	1608	1664	1720	1776	1832	1888	1944	N/A	N/A

Open Back / Tight Seat & Back / 24" Seat Width / 350 lb. Weight Capacity

ARM CHAIR / URETHANE ARMS / ACCEPTS SEAT ON RIGHT

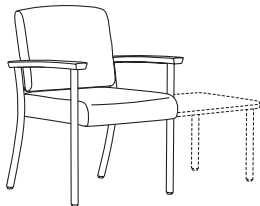


1922-C

Overall: 23.25"w 25.5"d 34"h		Arm: 25"h		COM: 1.75 yds.									
Seat: 20"w 18.25"d 18.5"h		Weight: 45 lbs.		COL: n/a									
COM	COL	1	2	3	4	5	6	7	8	9	10	L1	L2
1149	N/A	1158	1195	1233	1270	1307	1345	1382	1420	1457	1494	N/A	N/A

Open Back / Tight Seat & Back / 350 lb. Weight Capacity

ARM CHAIR / URETHANE ARMS / ACCEPTS TABLE ON RIGHT

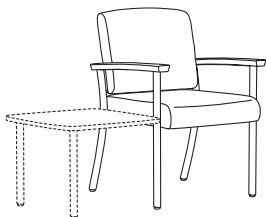


1922-T

Overall: 23.25"w 25.5"d 34"h		Arm: 25"h		COM: 1.75 yds.									
Seat: 20"w 18.25"d 18.5"h		Weight: 45 lbs.		COL: n/a									
COM	COL	1	2	3	4	5	6	7	8	9	10	L1	L2
1049	N/A	1070	1091	1121	1152	1183	1213	1244	1274	1305	1335	N/A	N/A

Open Back / Tight Seat & Back / 350 lb. Weight Capacity

ARM CHAIR / URETHANE ARMS / ACCEPTS TABLE ON LEFT



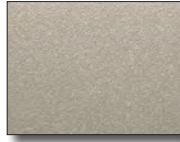
1922-LT

Overall: 23.25"w 25.5"d 34"h		Arm: 25"h		COM: 1.75 yds.									
Seat: 20"w 18.25"d 18.5"h		Weight: 45 lbs.		COL: n/a									
COM	COL	1	2	3	4	5	6	7	8	9	10	L1	L2
1049	N/A	1070	1091	1121	1152	1183	1213	1244	1274	1305	1335	N/A	N/A

Open Back / Tight Seat & Back / 350 lb. Weight Capacity

DESCRIPTION:

- Upholstery Frames: Steel, Plywood & Hardwood
- Seat: High Density Polyurethane Foam Over Strap Webbing
- Back: High Density Polyurethane Foam Over Plywood
- Upholstered Covers: Stapled On Seat & Back
- Urethane Arm Caps - Standard
- Exposed Metal Legs: 14 Gauge Steel Tubing / Powder Coated (Wallsaver Back Legs)
- Leather Upholstery Not Available
- Adjustable Height Leveling Glides Standard
- 10 Year Warranty



Leg Color: Champagne

OPTIONS:

- EPAC-1 Black Polyester Arm Caps (Set Of 2).....\$374
- AWAC-1 Wood Arm Caps (Set Of 2).....No Upcharge
- SSAC-2 Solid Surface Arm Caps (Set Of 2).....\$737
- RUC-G Removable Upholstery Covers \$100 Chair
- CC Contrasting Covers.....\$129

All Austen Components Are Field Replaceable.

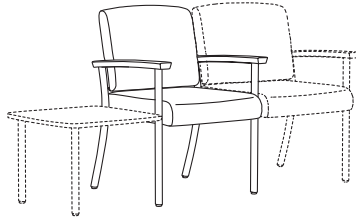
NOTE: All Seating Configurations Are Viewed From Left To Right Facing. Please Attach A Layout Showing Seating Configuration w/ Your Order. Assembled Units Must Be Shipped In Configurations Of 3 Or Less.

TANDEM

ITEM #:

SPECIFICATIONS | GRADES | LIST PRICES:

ARM CHAIR / URETHANE ARMS / ACCEPTS TABLE ON LEFT / SEAT ON RIGHT



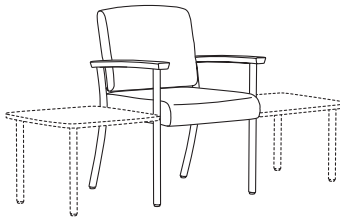
1922-TC

Overall: 23.25"w 25.5"d 34"h **Arm:** 25"h **COM:** 1.75 yds.
Seat: 20"w 18.25"d 18.5"h **Weight:** 45 lbs. **COL:** n/a

COM	COL	1	2	3	4	5	6	7	8	9	10	L1	L2
1149	N/A	1158	1195	1233	1270	1307	1345	1382	1420	1457	1494	N/A	N/A

Open Back / Tight Seat & Back / 350 lb. Weight Capacity

ARM CHAIR / URETHANE ARMS / ACCEPTS TABLE ON LEFT / RIGHT



1922-TT

Overall: 23.25"w 25.5"d 34"h **Arm:** 25"h **COM:** 1.75 yds.
Seat: 20"w 18.25"d 18.5"h **Weight:** 45 lbs. **COL:** n/a

COM	COL	1	2	3	4	5	6	7	8	9	10	L1	L2
1049	N/A	1070	1091	1121	1152	1183	1213	1244	1274	1305	1335	N/A	N/A

Open Back / Tight Seat & Back / 350 lb. Weight Capacity

DESCRIPTION:

- Upholstery Frames: Steel, Plywood & Hardwood
- Seat: High Density Polyurethane Foam Over Strap Webbing
- Back: High Density Polyurethane Foam Over Plywood
- Upholstered Covers: Stapled On Seat & Back
- Urethane Arm Caps - Standard
- Exposed Metal Legs: 14 Gauge Steel Tubing / Powder Coated (Wallsaver Back Legs, Except 1925 Patient Chair)
- Leather Upholstery Not Available
- Adjustable Height Leveling Glides Standard
- 10 Year Warranty



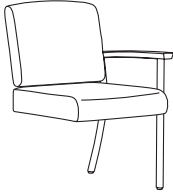
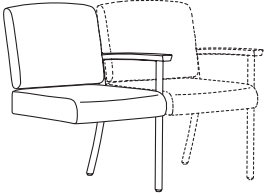
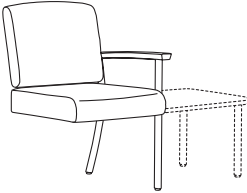

Leg Color: Champagne

OPTIONS:

- EPAC-1 Black Polyester Arm Caps (Set Of 2).....\$374
- AWAC-1 Wood Arm Caps (Set Of 2).....No Upcharge
- SSAC-2 Solid Surface Arm Caps (Set Of 2).....\$737
- RUC-G Removable Upholstery Covers \$100 Chair
- CC Contrasting Covers.....\$129

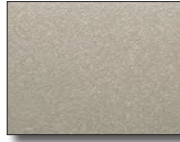
All Austen Components Are Field Replaceable.

NOTE: All Seating Configurations Are Viewed From Left To Right Facing. Please Attach A Layout Showing Seating Configuration w/ Your Order. Assembled Units Must Be Shipped In Configurations Of 3 Or Less.

TANDEM		ITEM #:	SPECIFICATIONS GRADES LIST PRICES:															
	1923	ADD-A-SEAT / URETHANE ARMS <i>Overall: 21.75"w 25.5"d 34"h</i> <i>Seat: 20"w 18.25"d 18.5"h</i>	<i>Arm: 25"h</i> Weight: 40 lbs.	COM: 1.75 yds. COL: n/a	COM	COL	1	2	3	4	5	6	7	8	9	10	L1	L2
		977	N/A	983	1014	1045	1076	1107	1139	1170	1201	1232	1263	N/A	N/A	<i>Open Back / Tight Seat & Back / 350 lb. Weight Capacity</i>		
			1923-C	ADD-A-SEAT / URETHANE ARMS / ACCEPTS SEAT ON RIGHT <i>Overall: 21.75"w 25.5"d 34"h</i> <i>Seat: 20"w 18.25"d 18.5"h</i>	<i>Arm: 25"h</i> Weight: 40 lbs.	COM: 1.75 yds. COL: n/a	COM	COL	1	2	3	4	5	6	7	8	9	10
977	N/A			983	1014	1045	1076	1107	1139	1170	1201	1232	1263	N/A	N/A	<i>Open Back / Tight Seat & Back / 350 lb. Weight Capacity</i>		
	1923-T			ADD-A-SEAT / URETHANE ARMS / ACCEPTS TABLE ON RIGHT <i>Overall: 21.75"w 25.5"d 34"h</i> <i>Seat: 20"w 18.25"d 18.5"h</i>	<i>Arm: 25"h</i> Weight: 40 lbs.	COM: 1.75 yds. COL: n/a	COM	COL	1	2	3	4	5	6	7	8	9	10
		977	N/A	983	1014	1045	1076	1107	1139	1170	1201	1232	1263	N/A	N/A	<i>Open Back / Tight Seat & Back / 350 lb. Weight Capacity</i>		
			1925	HIGH BACK PATIENT CHAIR / URETHANE ARMS <i>Overall: 23.25"w 25.5"d 45"h</i> <i>Seat: 20"w 18.25"d 18.5"h</i>	<i>Arm: 25"h</i> Weight: 50 lbs.	COM: 2.25 yds. COL: n/a	COM	COL	1	2	3	4	5	6	7	8	9	10
1281	N/A			1330	1376	1432	1488	1544	1600	1656	1712	1768	1825	N/A	N/A	<i>Open Back / Tight Seat & Back / 350 lb. Weight Capacity</i>		

DESCRIPTION:

- Upholstery Frames: Steel, Plywood & Hardwood
- Seat: High Density Polyurethane Foam Over Strap Webbing
- Back: High Density Polyurethane Foam Over Plywood
- Upholstered Covers: Stapled On Seat & Back
- Urethane Arm Caps - Standard
- Exposed Metal Legs: 14 Gauge Steel Tubing / Powder Coated (Wallsaver Back Legs)
- Leather Upholstery Not Available
- Adjustable Height Leveling Glides Standard
- 10 Year Warranty



Leg Color: Champagne

OPTIONS:

- EPAC-1 Black Polyester Arm Caps (Set Of 2).....\$374
- AWAC-1 Wood Arm Caps (Set Of 2).....No Upcharge
- SSAC-2 Solid Surface Arm Caps (Set Of 2).....\$737
- RUC-G Removable Upholstery Covers \$100 Chair
- CC Contrasting Covers.....\$129

All Austen Components Are Field Replaceable.

NOTE: All Seating Configurations Are Viewed From Left To Right Facing. Please Attach A Layout Showing Seating Configuration w/ Your Order. Assembled Units Must Be Shipped In Configurations Of 3 Or Less.

BARIATRIC / TANDEM		ITEM #:	SPECIFICATIONS GRADES LIST PRICES:														
	1932	BARIATRIC CHAIR / URETHANE ARMS <i>Overall: 33.25"w 25.5"d 34"h</i> <i>Seat: 30"w 18.25"d 18.5"h</i>	<i>Arm: 25"h</i> Weight: 55 lbs.	COM: 2.25 yds. COL: n/a													
		COM	COL	1	2	3	4	5	6	7	8	9	10	L1	L2		
		1440	N/A	1457	1507	1557	1606	1656	1706	1756	1806	1856	1906	N/A	N/A		
<i>Open Back / Tight Seat & Back / 500 lb. Weight Capacity</i>																	
	1932-C	BARIATRIC CHAIR / URETHANE ARMS / ACCEPTS SEAT ON RIGHT <i>Overall: 33.25"w 25.5"d 34"h</i> <i>Seat: 30"w 18.25"d 18.5"h</i>	<i>Arm: 25"h</i> Weight: 55 lbs.	COM: 2.25 yds. COL: n/a													
		COM	COL	1	2	3	4	5	6	7	8	9	10	L1	L2		
		1451	N/A	1467	1517	1567	1616	1666	1716	1766	1816	1866	1916	N/A	N/A		
<i>Open Back / Tight Seat & Back / 500 lb. Weight Capacity</i>																	
	1932-T	BARIATRIC CHAIR / URETHANE ARMS / ACCEPTS TABLE ON RIGHT <i>Overall: 33.25"w 25.5"d 34"h</i> <i>Seat: 30"w 18.25"d 18.5"h</i>	<i>Arm: 25"h</i> Weight: 55 lbs.	COM: 2.25 yds. COL: n/a													
		COM	COL	1	2	3	4	5	6	7	8	9	10	L1	L2		
		1440	N/A	1457	1507	1557	1606	1656	1706	1756	1806	1856	1906	N/A	N/A		
<i>Open Back / Tight Seat & Back / 500 lb. Weight Capacity</i>																	
	1932-LT	BARIATRIC CHAIR / URETHANE ARMS / ACCEPTS TABLE ON LEFT <i>Overall: 33.25"w 25.5"d 34"h</i> <i>Seat: 30"w 18.25"d 18.5"h</i>	<i>Arm: 25"h</i> Weight: 55 lbs.	COM: 2.25 yds. COL: n/a													
		COM	COL	1	2	3	4	5	6	7	8	9	10	L1	L2		
		1440	N/A	1457	1507	1557	1606	1656	1706	1756	1806	1856	1906	N/A	N/A		
<i>Open Back / Tight Seat & Back / 500 lb. Weight Capacity</i>																	

DESCRIPTION:

- Upholstery Frames: Steel, Plywood & Hardwood
- Seat: High Density Polyurethane Foam Over Strap Webbing
- Back: High Density Polyurethane Foam Over Plywood
- Upholstered Covers: Stapled On Seat & Back
- Urethane Arm Caps - Standard
- Exposed Metal Legs: 14 Gauge Steel Tubing / Powder Coated (Wallsaver Back Legs)
- Leather Upholstery Not Available
- Adjustable Height Leveling Glides Standard
- 10 Year Warranty



Leg Color: Champagne

OPTIONS:

- EPAC-1 Black Polyester Arm Caps (Set Of 2).....\$374
- AWAC-1 Wood Arm Caps (Set Of 2).....No Upcharge
- SSAC-2 Solid Surface Arm Caps (Set Of 2).....\$737
- RUC-G Removable Upholstery Covers \$100 Chair
- CC Contrasting Covers.....\$129

All Austen Components Are Field Replaceable.

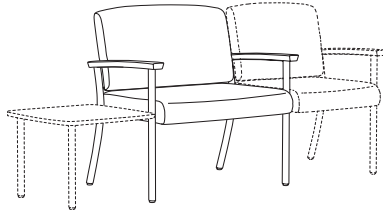
NOTE: All Seating Configurations Are Viewed From Left To Right Facing. Please Attach A Layout Showing Seating Configuration w/ Your Order. Assembled Units Must Be Shipped In Configurations Of 3 Or Less.

BARIATRIC / TANDEM

ITEM #:

SPECIFICATIONS | GRADES | LIST PRICES:

BARIATRIC CHAIR / URETHANE ARMS / ACCEPTS TABLE ON LEFT / SEAT ON RIGHT



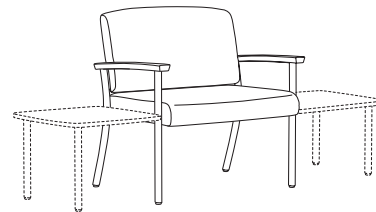
1932-TC

Overall: 33.25"w 25.5"d 34"h **Arm:** 25"h **COM:** 2.25 yds.
Seat: 30"w 18.25"d 18.5"h **Weight:** 55 lbs. **COL:** n/a

COM	COL	1	2	3	4	5	6	7	8	9	10	L1	L2
1451	N/A	1467	1517	1567	1616	1666	1716	1766	1816	1866	1916	N/A	N/A

Open Back / Tight Seat & Back / 500 lb. Weight Capacity

BARIATRIC CHAIR / URETHANE ARMS / ACCEPTS TABLE ON LEFT / RIGHT



1932-TT

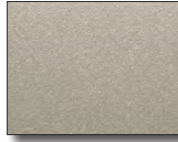
Overall: 33.25"w 25.5"d 34"h **Arm:** 25"h **COM:** 2.25 yds.
Seat: 30"w 18.25"d 18.5"h **Weight:** 55 lbs. **COL:** n/a

COM	COL	1	2	3	4	5	6	7	8	9	10	L1	L2
1440	N/A	1457	1507	1557	1606	1656	1706	1756	1806	1856	1906	N/A	N/A

Open Back / Tight Seat & Back / 500 lb. Weight Capacity

DESCRIPTION:

- Upholstery Frames: Steel, Plywood & Hardwood
- Seat: High Density Polyurethane Foam Over Strap Webbing
- Back: High Density Polyurethane Foam Over Plywood
- Upholstered Covers: Stapled On Seat & Back
- Urethane Arm Caps - Standard
- Exposed Metal Legs: 14 Gauge Steel Tubing / Powder Coated (Wallsaver Back Legs)
- Leather Upholstery Not Available
- Adjustable Height Leveling Glides Standard
- 10 Year Warranty



Leg Color: Champagne

OPTIONS:

- EPAC-1 Black Polyester Arm Caps (Set Of 2).....\$374
- AWAC-1 Wood Arm Caps (Set Of 2).....No Upcharge
- SSAC-2 Solid Surface Arm Caps (Set Of 2).....\$737
- RUC-G Removable Upholstery Covers \$100 Chair
- CC Contrasting Covers.....\$129

All Austen Components Are Field Replaceable.

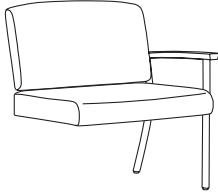
NOTE: All Seating Configurations Are Viewed From Left To Right Facing. Please Attach A Layout Showing Seating Configuration w/ Your Order. Assembled Units Must Be Shipped In Configurations Of 3 Or Less.

BARIATRIC / TANDEM

ITEM #:

SPECIFICATIONS | GRADES | LIST PRICES:

BARIATRIC ADD-A-SEAT / URETHANE ARMS



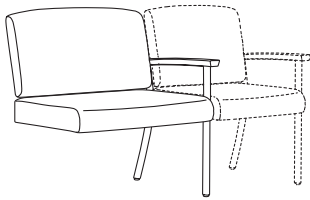
1933

Overall: 31.75"w 25.5"d 34"h **Arm:** 25"h **COM:** 2.25 yds.
Seat: 30"w 18.25"d 18.5"h **Weight:** 52 lbs. **COL:** n/a

COM	COL	1	2	3	4	5	6	7	8	9	10	L1	L2
1256	N/A	1283	1333	1383	1433	1483	1533	1583	1632	1682	1732	N/A	N/A

Open Back / Tight Seat & Back / 500 lb. Weight Capacity

BARIATRIC ADD-A-SEAT / URETHANE ARMS / ACCEPTS SEAT ON RIGHT



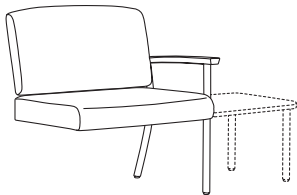
1933-C

Overall: 31.75"w 25.5"d 34"h **Arm:** 25"h **COM:** 2.25 yds.
Seat: 30"w 18.25"d 18.5"h **Weight:** 52 lbs. **COL:** n/a

COM	COL	1	2	3	4	5	6	7	8	9	10	L1	L2
1256	N/A	1283	1333	1383	1433	1483	1533	1583	1632	1682	1732	N/A	N/A

Open Back / Tight Seat & Back / 500 lb. Weight Capacity

BARIATRIC ADD-A-SEAT / URETHANE ARMS / ACCEPTS TABLE ON RIGHT



1933-T

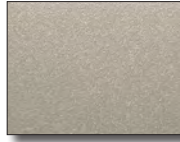
Overall: 31.75"w 25.5"d 34"h **Arm:** 25"h **COM:** 2.25 yds.
Seat: 30"w 18.25"d 18.5"h **Weight:** 52 lbs. **COL:** n/a

COM	COL	1	2	3	4	5	6	7	8	9	10	L1	L2
1256	N/A	1283	1333	1383	1433	1483	1533	1583	1632	1682	1732	N/A	N/A

Open Back / Tight Seat & Back / 500 lb. Weight Capacity

DESCRIPTION:

- Upholstery Frames: Steel, Plywood & Hardwood
- Seat: High Density Polyurethane Foam Over Strap Webbing
- Back: High Density Polyurethane Foam Over Plywood
- Upholstered Covers: Stapled On Seat & Back
- Urethane Arm Caps - Standard
- Exposed Metal Legs: 14 Gauge Steel Tubing / Powder Coated (Wallsaver Back Legs)
- Leather Upholstery Not Available
- Adjustable Height Leveling Glides Standard
- 10 Year Warranty



Leg Color: Champagne

OPTIONS:

- EPAC-1 Black Polyester Arm Caps (Set Of 2).....\$374
- AWAC-1 Wood Arm Caps (Set Of 2).....No Upcharge
- SSAC-2 Solid Surface Arm Caps (Set Of 2).....\$737
- RUC-G Removable Upholstery Covers \$100 Chair
- CC Contrasting Covers.....\$129

All Austen Components Are Field Replaceable.

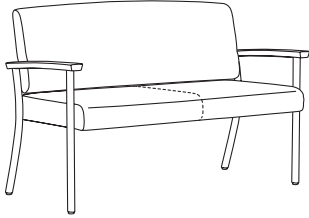
NOTE: All Seating Configurations Are Viewed From Left To Right Facing. Please Attach A Layout Showing Seating Configuration w/ Your Order. Assembled Units Must Be Shipped In Configurations Of 3 Or Less.

TANDEM

ITEM #:

SPECIFICATIONS | GRADES | LIST PRICES:

TWO PLACE SOFA / URETHANE ARMS



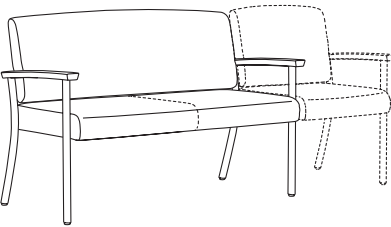
1950

Overall: 51.25"w 25.5"d 34"h **Arm:** 25"h **COM:** 3.5 yds.
Seat: 48"w 18.25"d 18.5"h **Weight:** 65 lbs. **COL:** n/a

COM	COL	1	2	3	4	5	6	7	8	9	10	L1	L2
1857	N/A	1911	1992	2074	2155	2236	2317	2398	2479	2560	2641	N/A	N/A

Open Back / Tight Seat & Back / 500 lb. Weight Capacity

TWO PLACE SOFA / URETHANE ARMS / ACCEPTS SEAT ON RIGHT



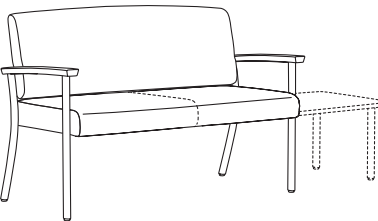
1950-C

Overall: 51.25"w 25.5"d 34"h **Arm:** 25"h **COM:** 3.5 yds.
Seat: 48"w 18.25"d 18.5"h **Weight:** 65 lbs. **COL:** n/a

COM	COL	1	2	3	4	5	6	7	8	9	10	L1	L2
1857	N/A	1911	1992	2074	2155	2236	2317	2398	2479	2560	2641	N/A	N/A

Open Back / Tight Seat & Back / 500 lb. Weight Capacity

TWO PLACE SOFA / URETHANE ARMS / ACCEPTS TABLE ON RIGHT



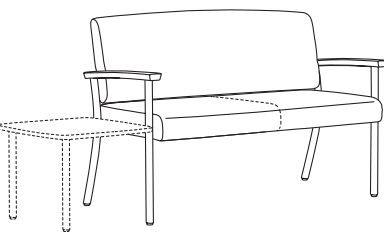
1950-T

Overall: 51.25"w 25.5"d 34"h **Arm:** 25"h **COM:** 3.5 yds.
Seat: 48"w 18.25"d 18.5"h **Weight:** 65 lbs. **COL:** n/a

COM	COL	1	2	3	4	5	6	7	8	9	10	L1	L2
1857	N/A	1911	1992	2074	2155	2236	2317	2398	2479	2560	2641	N/A	N/A

Open Back / Tight Seat & Back / 500 lb. Weight Capacity

TWO PLACE SOFA / URETHANE ARMS / ACCEPTS TABLE ON LEFT



1950-LT

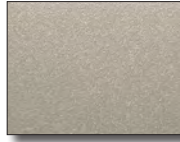
Overall: 51.25"w 25.5"d 34"h **Arm:** 25"h **COM:** 3.5 yds.
Seat: 48"w 18.25"d 18.5"h **Weight:** 65 lbs. **COL:** n/a

COM	COL	1	2	3	4	5	6	7	8	9	10	L1	L2
1857	N/A	1911	1992	2074	2155	2236	2317	2398	2479	2560	2641	N/A	N/A

Open Back / Tight Seat & Back / 500 lb. Weight Capacity

DESCRIPTION:

- Upholstery Frames: Steel, Plywood & Hardwood
- Seat: High Density Polyurethane Foam Over Strap Webbing
- Back: High Density Polyurethane Foam Over Plywood
- Upholstered Covers: Stapled On Seat & Back
- Urethane Arm Caps - Standard
- Exposed Metal Legs: 14 Gauge Steel Tubing / Powder Coated (Wallsaver Back Legs)
- Leather Upholstery Not Available
- Adjustable Height Leveling Glides Standard
- 10 Year Warranty



Leg Color: Champagne

OPTIONS:

- EPAC-1 Black Polyester Arm Caps (Set Of 2).....\$374
- AWAC-1 Wood Arm Caps (Set Of 2).....No Upcharge
- SSAC-2 Solid Surface Arm Caps (Set Of 2).....\$737
- RUC-G Removable Upholstery Covers \$100 Chair
- CC Contrasting Covers.....\$129

All Austen Components Are Field Replaceable.

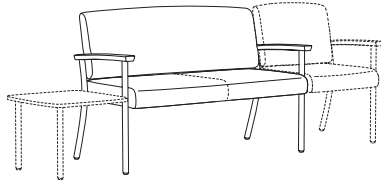
NOTE: All Seating Configurations Are Viewed From Left To Right Facing. Please Attach A Layout Showing Seating Configuration w/ Your Order. Assembled Units Must Be Shipped In Configurations Of 3 Or Less.

TANDEM

ITEM #:

SPECIFICATIONS | GRADES | LIST PRICES:

TWO PLACE SOFA / URETHANE ARMS / ACCEPTS TABLE ON LEFT / SEAT ON RIGHT



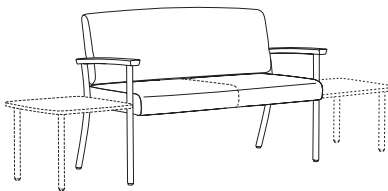
1950-TC

Overall: 51.25"w 25.5"d 34"h **Arm:** 25"h **COM:** 3.5 yds.
Seat: 48"w 18.25"d 18.5"h **Weight:** 65 lbs. **COL:** n/a

COM	COL	1	2	3	4	5	6	7	8	9	10	L1	L2
1857	N/A	1911	1992	2074	2155	2236	2317	2398	2479	2560	2641	N/A	N/A

Open Back / Tight Seat & Back / 500 lb. Weight Capacity

TWO PLACE SOFA / URETHANE ARMS / ACCEPTS TABLE ON LEFT / RIGHT



1950-TT

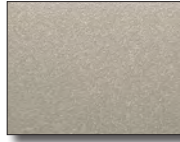
Overall: 51.25"w 25.5"d 34"h **Arm:** 25"h **COM:** 3.5 yds.
Seat: 48"w 18.25"d 18.5"h **Weight:** 65 lbs. **COL:** n/a

COM	COL	1	2	3	4	5	6	7	8	9	10	L1	L2
1857	N/A	1911	1992	2074	2155	2236	2317	2398	2479	2560	2641	N/A	N/A

Open Back / Tight Seat & Back / 500 lb. Weight Capacity

DESCRIPTION:

- Upholstery Frames: Steel, Plywood & Hardwood
- Seat: High Density Polyurethane Foam Over Strap Webbing
- Back: High Density Polyurethane Foam Over Plywood
- Upholstered Covers: Stapled On Seat & Back
- Urethane Arm Caps - Standard
- Exposed Metal Legs: 14 Gauge Steel Tubing / Powder Coated (Wallsaver Back Legs)
- Leather Upholstery Not Available
- Adjustable Height Leveling Glides Standard
- 10 Year Warranty



Leg Color: Champagne

OPTIONS:

- EPAC-1 Black Polyester Arm Caps (Set Of 2).....\$374
- AWAC-1 Wood Arm Caps (Set Of 2).....No Upcharge
- SSAC-2 Solid Surface Arm Caps (Set Of 2).....\$737
- RUC-G Removable Upholstery Covers \$100 Chair
- CC Contrasting Covers.....\$129

All Austen Components Are Field Replaceable.

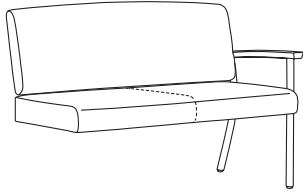
NOTE: All Seating Configurations Are Viewed From Left To Right Facing. Please Attach A Layout Showing Seating Configuration w/ Your Order. Assembled Units Must Be Shipped In Configurations Of 3 Or Less.

TANDEM

ITEM #:

SPECIFICATIONS | GRADES | LIST PRICES:

TWO PLACE ADD-A-SEAT / URETHANE ARMS



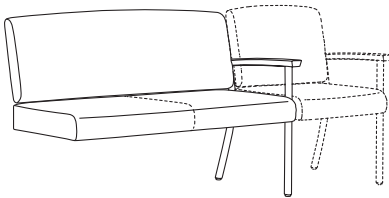
1951

Overall: 49.75"w 25.5"d 34"h **Arm:** 25"h **COM:** 3.5 yds.
Seat: 48"w 18.25"d 18.5"h **Weight:** 62 lbs. **COL:** n/a

COM	COL	1	2	3	4	5	6	7	8	9	10	L1	L2
1883	N/A	1936	2017	2098	2179	2260	2341	2422	2504	2585	2666	N/A	N/A

Open Back / Tight Seat & Back / 500 lb. Weight Capacity

TWO PLACE ADD-A-SEAT / URETHANE ARMS / ACCEPTS SEAT ON RIGHT



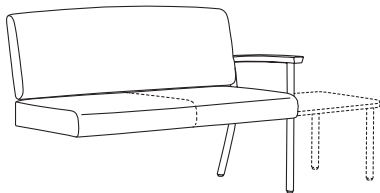
1951-C

Overall: 49.75"w 25.5"d 34"h **Arm:** 25"h **COM:** 3.5 yds.
Seat: 48"w 18.25"d 18.5"h **Weight:** 62 lbs. **COL:** n/a

COM	COL	1	2	3	4	5	6	7	8	9	10	L1	L2
1883	N/A	1936	2017	2098	2179	2260	2341	2422	2504	2585	2666	N/A	N/A

Open Back / Tight Seat & Back / 500 lb. Weight Capacity

TWO PLACE ADD-A-SEAT / URETHANE ARMS / ACCEPTS TABLE ON RIGHT



1951-T

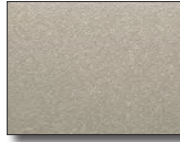
Overall: 49.75"w 25.5"d 34"h **Arm:** 25"h **COM:** 3.5 yds.
Seat: 48"w 18.25"d 18.5"h **Weight:** 62 lbs. **COL:** n/a

COM	COL	1	2	3	4	5	6	7	8	9	10	L1	L2
1883	N/A	1936	2017	2098	2179	2260	2341	2422	2504	2585	2666	N/A	N/A

Open Back / Tight Seat & Back / 500 lb. Weight Capacity

DESCRIPTION:

- High Pressure Laminate Over Plywood Core (Exposed Plywood Edge Is Tinted To Complement Top Laminate Color) *Optional Self-Edge Available
- Wilsonart Plastic Laminates Standard. Alternate Selections May Be Specified From Most Major Laminate Manufacturers. (Contact Factory For Availability)
- Exposed Metal Legs: 14 Gauge Steel Tubing / Powder Coated
- 10 Year Warranty



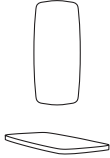
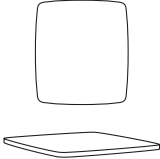
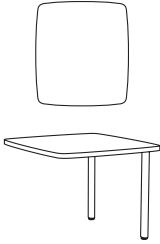
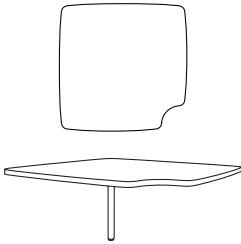
Leg Color: Champagne

OPTIONS:

- SE10W Self-Edge Table Top - 10"W x 22.5"D\$33
- SE20W Self-Edge Table Top - 20"W x 22.5"D\$38
- SE27W Self-Edge Table Top - 27.5"W x 27.5"D\$43

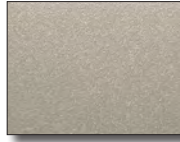
Specify Laminate (See Page 6)

NOTE: All Seating Configurations Are Viewed From Left To Right Facing. Please Attach A Layout Showing Seating Configuration w/ Your Order. Assembled Units Must Be Shipped In Configurations Of 3 Or Less.

CONNECTING TABLES	ITEM #:	SPECIFICATIONS GRADES LIST PRICES:												
<p>CONNECTING HALF TABLE</p> 	19C1022-L	<i>Overall: 10"w 22.5"d 16"h</i>		<i>Weight: 15 lbs.</i>										
		COM	COL	1	2	3	4	5	6	7	8	9	10	L1
		417 High Pressure Laminate Over Plywood Core												
<p>CONNECTING TABLE</p> 	19C2022-L	<i>Overall: 20"w 22.5"d 16"h</i>		<i>Weight: 20 lbs.</i>										
		COM	COL	1	2	3	4	5	6	7	8	9	10	L1
		561 High Pressure Laminate Over Plywood Core												
<p>CONNECTING END TABLE</p> 	19E2022-L	<i>Overall: 20"w 22.5"d 16"h</i>		<i>Weight: 22 lbs.</i>										
		COM	COL	1	2	3	4	5	6	7	8	9	10	L1
		661 High Pressure Laminate Over Plywood Core												
<p>CONNECTING CORNER TABLE</p> 	19SC2727-L	<i>Overall: 27.5"w 27.5"d 16"h</i>		<i>Weight: 40 lbs.</i>										
		COM	COL	1	2	3	4	5	6	7	8	9	10	L1
		769 High Pressure Laminate Over Plywood Core												

DESCRIPTION:

- High Pressure Laminate Over Plywood Core (Exposed Plywood Edge Is Tinted To Complement Top Laminate Color) *Optional Self-Edge Available
- Wilsonart Plastic Laminates Standard. Alternate Selections May Be Specified From Most Major Laminate Manufacturers. (Contact Factory For Availability)
- Exposed Metal Legs: 14 Gauge Steel Tubing / Powder Coated
- 10 Year Warranty

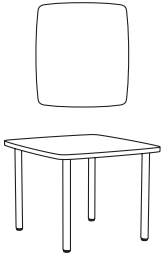
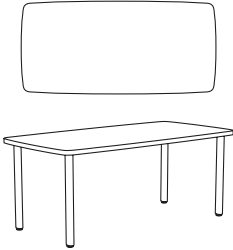


Leg Color: Champagne

OPTIONS:

- SE20W Self-Edge Table Top - 20"W x 22.5"D\$38
- SE42W Self-Edge Table Top - 27.5"W x 27.5"D\$47

Specify Laminate (See Page 6)

TABLES		ITEM #:	SPECIFICATIONS GRADES LIST PRICES:													
FREESTANDING END TABLE			<i>Overall: 20"w 22.5"d 16"h</i>			<i>Weight: 25 lbs.</i>										
		192022-L	COM	COL	1	2	3	4	5	6	7	8	9	10	L1	L2
			810 <i>High Pressure Laminate Over Plywood Core</i>													
FREESTANDING COFFEE TABLE			<i>Overall: 42"w 20"d 16"h</i>			<i>Weight: 45 lbs.</i>										
		194220-L	COM	COL	1	2	3	4	5	6	7	8	9	10	L1	L2
			952 <i>High Pressure Laminate Over Plywood Core</i>													

ARM CAPS / TOPS / COVERS	OPTION #:	SPECIFICATIONS LIST PRICES AVAILABILITY:
<p>POLYESTER ARM CAPS</p> 	<p>EPAC-1</p> <p>Overall: 2.75"w 22.5"d 1.125"h</p> <p>\$374 (Set Of 2) POLYESTER <i>Black Polyester Arm Cap (Additional Colors Available)</i></p> <p>Available: Austen Guest / Tandem Collection</p>	
<p>WOOD ARM CAPS / SOLID SURFACE ARM CAPS</p> 	<p>AWAC-1</p> <p>Overall: 2.75"w 22.5"d 1.125"h</p> <p>NO UPCHARGE (Set Of 2) WOOD <i>Wood Arm Cap (Specify Finish)</i></p> <p>Available: Austen Guest / Tandem Collection</p> <p>SSAC-2</p> <p>\$737 (Set Of 2) SOLID SURFACE <i>White Solid Surface Arm Cap (Additional Colors Available - Call For Pricing)</i></p> <p>Available: Austen Guest / Tandem Collection</p>	
<p>REMOVABLE UPHOLSTERY COVERS - GUEST</p> 	<p>RUC-G</p> <p>Overall: N/A</p> <p>\$100 LIST UPCHARGE PER GUEST CHAIR <i>Removable Upholstery Covers Attached w/ Velcro (Antimicrobial Moisture Barrier Fully Encapsulates All Foam Areas)</i></p> <p>Available: Austen Guest / Tandem Collection</p>	
<p>SELF EDGE TABLE TOP</p> 	<p>Overall: 10"W x 22.5"D x .75"H / 20"W x 22.5"D x .75"H / 27.5"W x 27.5"D x .75"H</p> <p>SE10W \$33 (Self Edge Table Top - 10"W x 22.5"D) <i>High Pressure Laminate Top w/ Self Edge - Specify Laminate Color</i></p> <p>SE20W \$38 (Self Edge Table Top - 20"W x 22.5"D) <i>High Pressure Laminate Top w/ Self Edge - Specify Laminate Color</i></p> <p>SE27W \$43 (Self Edge Table Top - 27.5"W x 27.5"D) <i>High Pressure Laminate Top w/ Self Edge - Specify Laminate Color</i></p> <p>SE42W \$47 (Self Edge Table Top - 42"W x 20"D) <i>High Pressure Laminate Top w/ Self Edge - Specify Laminate Color</i></p> <p>Available: Austen Table Collection</p>	
<p>CONTRASTING COVERS</p> 	<p>CC</p> <p>Overall: N/A</p> <p>\$129</p> <p><i>NOTE: If Two Or More Upholsteries Or Leathers Are Used On Any Piece Of Furniture, Then A Contrast Charge Will Apply Per Order. When Using Trinity Upholstery, The Higher Priced Upholstery Grade Will Be Used In Pricing, Unless It's Trinity Leather With Fabric Contrast Welt, Or COM With Trinity Contrast Welt, Then Contact Customer Service For Pricing.</i></p> <p>Available: Austen Guest / Tandem Collection</p>	