

Austen

LOUNGE / BENCHES

Effective: March 1, 2025

T R I N I T Y

Date:

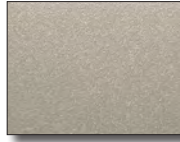
Page:

Modification:

Description:

DESCRIPTION:

- Upholstery Frames: Steel, Plywood & Hardwood
- Seat: High Density Polyurethane Foam Over Strap Webbing
- Back: High Density Polyurethane Foam Over Plywood
- Upholstered Covers: Stapled On Seat & Back
- Urethane Arm Caps - Standard
- Exposed Metal Legs: 14 Gauge Steel Tubing / Powder Coated (Wallsaver Back Legs)
- Leather Upholstery Not Available
- Adjustable Height Leveling Glides Standard
- 10 Year Warranty

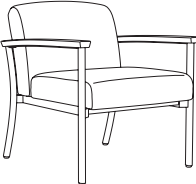
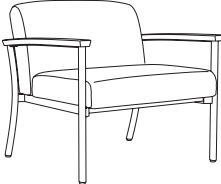
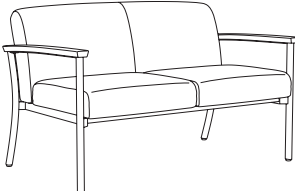
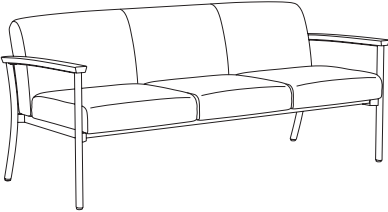


Leg Color: Champagne

OPTIONS:

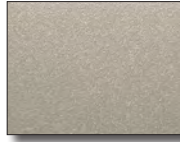
- EPAC-2 Black Polyester Arm Caps (Set Of 2).....\$393
- EWAC-1 Wood Arm Caps (Set Of 2).....No Upcharge
- SSAC-1 Solid Surface Arm Caps (Set Of 2).....\$974
- RUC-L Removable Upholstery Covers\$150 Per Lounge Chair
- CC Contrasting Covers.....\$129

All Austen Components Are Field Replaceable.

LOUNGE		ITEM #:	SPECIFICATIONS GRADES LIST PRICES:													
	1901	Overall: 26.125"w 29.75"d 32"h Seat: 22.5"w 20.5"d 19"h	Arm: 25"h Weight: TBD	COM: 2.5 yds. COL: n/a											L1	L2
		COM	COL	1	2	3	4	5	6	7	8	9	10			
		1497	N/A	1529	1588	1648	1707	1767	1826	1885	1945	2004	2063	N/A	N/A	
														Tight Seat & Back / 500 lb. Weight Capacity		
	1901-X	Overall: 32.125"w 29.75"d 32h Seat: 28.5"w 20.5"d 19"h	Arm: 25"h Weight: TBD	COM: 3.0 yds. COL: n/a											L1	L2
		COM	COL	1	2	3	4	5	6	7	8	9	10			
		1648	N/A	1695	1767	1838	1909	1980	2051	2123	2194	2265	2336	N/A	N/A	
														Tight Seat & Back / 750 lb. Weight Capacity		
	1902	Overall: 48.375"w 29.75"d 32"h Seat: 44.75"w 20.5"d 19"h	Arm: 25"h Weight: 45 lbs.	COM: 4.75 yds. COL: n/a											L1	L2
		COM	COL	1	2	3	4	5	6	7	8	9	10			
		1913	N/A	2026	2137	2247	2358	2469	2579	2690	2800	2911	3022	N/A	N/A	
														Tight Seat & Back / 750 lb. Weight Capacity		
	1903	Overall: 70.375"w 29.75"d 32"h Seat: 66.75"w 20.5"d 19"h	Arm: 25"h Weight: TBD	COM: 7.0 yds. COL: n/a											L1	L2
		COM	COL	1	2	3	4	5	6	7	8	9	10			
		2398	N/A	2592	2759	2925	3091	3257	3423	3590	3756	3922	4088	N/A	N/A	
														Tight Seat & Back / 1000 lb. Weight Capacity		

DESCRIPTION:

- Upholstery Frames: Steel, Plywood & Hardwood
- Seat: High Density Polyurethane Foam Over Strap Webbing
- Back: High Density Polyurethane Foam Over Plywood
- Upholstered Covers: Stapled On Seat & Back
- Urethane Arm Caps - Standard
- Exposed Metal Legs: 14 Gauge Steel Tubing / Powder Coated (Wallsaver Back Legs)
- Leather Upholstery Not Available
- Adjustable Height Leveling Glides Standard
- 10 Year Warranty



Leg Color: Champagne

OPTIONS:

- EPAC-2 Black Polyester Arm Caps (Set Of 2).....\$393
- EWAC-1 Wood Arm Caps (Set Of 2).....No Upcharge
- SSAC-1 Solid Surface Arm Caps (Set Of 2).....\$974
- RUC-L Removable Upholstery Covers\$150 Per Lounge Chair
- CC Contrasting Covers.....\$129

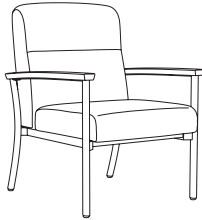
All Austen Components Are Field Replaceable.

LOUNGE

ITEM #:

SPECIFICATIONS | GRADES | LIST PRICES:

HIGH BACK LOUNGE CHAIR / OPEN URETHANE ARMS



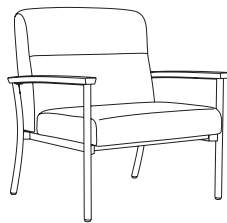
1904

Overall: 26.125"w 29.75"d 38.625"h **Arm:** 25"h **COM:** 2.75 yds.
Seat: 22.5"w 20.5"d 19"h **Weight:** TBD **COL:** n/a

COM	COL	1	2	3	4	5	6	7	8	9	10	L1	L2
1572	N/A	1600	1660	1719	1778	1838	1897	1956	2016	2075	2135	N/A	N/A

Tight Seat & Back / 500 lb. Weight Capacity

BARIATRIC HIGH BACK LOUNGE CHAIR / OPEN URETHANE ARMS



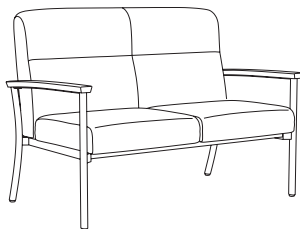
1904-X

Overall: 32.125"w 29.75"d 38.625h **Arm:** 25"h **COM:** 3.25 yds.
Seat: 28.5"w 20.5"d 19"h **Weight:** TBD **COL:** n/a

COM	COL	1	2	3	4	5	6	7	8	9	10	L1	L2
1774	N/A	1814	1885	1956	2028	2099	2170	2241	2313	2384	2455	N/A	N/A

Tight Seat & Back / 750 lb. Weight Capacity

HIGH BACK TWO PLACE SOFA / OPEN URETHANE ARMS



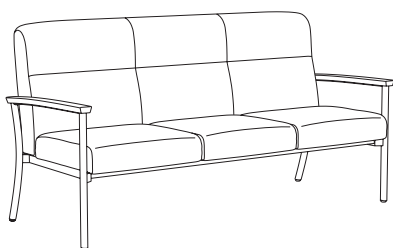
1905

Overall: 48.375"w 29.75"d 38.625"h **Arm:** 25"h **COM:** 5.0 yds.
Seat: 44.75"w 20.5"d 19"h **Weight:** TBD **COL:** n/a

COM	COL	1	2	3	4	5	6	7	8	9	10	L1	L2
1987	N/A	2096	2207	2317	2428	2538	2649	2760	2870	2981	3092	N/A	N/A

Tight Seat & Back / 750 lb. Weight Capacity

HIGH BACK THREE PLACE SOFA / OPEN URETHANE ARMS



1906

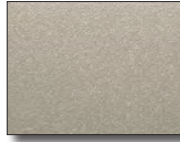
Overall: 70.375"w 29.75"d 38.625"h **Arm:** 25"h **COM:** 7.25 yds.
Seat: 66.75"w 20.5"d 19"h **Weight:** TBD **COL:** n/a

COM	COL	1	2	3	4	5	6	7	8	9	10	L1	L2
2499	N/A	2687	2854	3020	3186	3352	3518	3685	3851	4017	4183	N/A	N/A

Tight Seat & Back / 1000 lb. Weight Capacity

DESCRIPTION:

- Upholstery Frames: Steel, Plywood & Hardwood
- Seat: High Density Polyurethane Foam Over Strap Webbing
- Back: High Density Polyurethane Foam Over Plywood
- Upholstered Covers: Stapled On Seat & Back
- Urethane Arm Caps - Standard
- Exposed Metal Legs: 14 Gauge Steel Tubing / Powder Coated (Wallsaver Back Legs)
- Leather Upholstery Not Available
- Adjustable Height Leveling Glides Standard
- 10 Year Warranty



Leg Color: Champagne

OPTIONS:

RUC-B Removable Upholstery Covers \$100 Per Bench

All Austen Components Are Field Replaceable.

BENCHES

ITEM #:

SPECIFICATIONS | GRADES | LIST PRICES:

SINGLE SEAT BENCH



1911

Overall: 31.75" w 22" d 19" h
Seat: 31.75" w 22" d 19" h

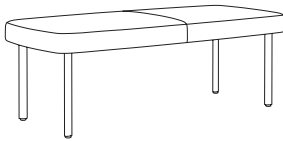
Arm: n/a
Weight: TBD

COM: 1.5 yds.
COL: n/a

COM	COL	1	2	3	4	5	6	7	8	9	10	L1	L2
845	N/A	867	900	934	968	1001	1035	1069	1102	1136	1170	N/A	N/A

Tight Seat / 500 lb. Weight Capacity

DOUBLE SEAT BENCH



1912



Overall: 54" w 22" d 19" h
Seat: 54" w 22" d 19" h

Arm: n/a
Weight: TBD

COM: 3.25 yds.
COL: n/a

COM	COL	1	2	3	4	5	6	7	8	9	10	L1	L2
1344	N/A	1417	1490	1563	1636	1709	1782	1855	1928	2000	2073	N/A	N/A

Tight Seat / 500 lb. Weight Capacity

ARM CAPS / COVERS	OPTION #:	SPECIFICATIONS LIST PRICES AVAILABILITY:
<p data-bbox="94 180 289 205">POLYESTER ARM CAPS</p> 	EPAC-2	<p data-bbox="581 180 824 205"><i>Overall: 2.75"w 22.5"d 1.125"h</i></p> <hr/> <p data-bbox="581 268 950 321">\$393 (Set Of 2) POLYESTER <i>Black Polyester Arm Cap (Additional Colors Available)</i></p> <p data-bbox="581 369 852 394"><i>Available: Austen Lounge Collection</i></p>
<p data-bbox="94 552 483 577">WOOD ARM CAPS / SOLID SURFACE ARM CAPS</p> 	EWAC-1	<p data-bbox="581 552 824 577"><i>Overall: 2.75"w 22.5"d 1.125"h</i></p> <hr/> <p data-bbox="581 640 873 693">NO UPCHARGE (Set Of 2) WOOD <i>Wood Arm Cap (Specify Finish)</i></p> <p data-bbox="581 716 852 741"><i>Available: Austen Lounge Collection</i></p>
<p data-bbox="94 907 555 932">REMOVABLE UPHOLSTERY COVERS - LOUNGE / BENCHES</p> 	RUC-L	<p data-bbox="581 907 682 932"><i>Overall: N/A</i></p> <hr/> <p data-bbox="581 1008 1372 1060">\$150 LIST UPCHARGE PER LOUNGE CHAIR <i>Removable Upholstery Covers Attached w/ Velcro (Antimicrobial Moisture Barrier Fully Encapsulates All Foam Areas)</i></p> <p data-bbox="581 1073 938 1098"><i>Available: Austen Standard & High-Back Lounge</i></p>
<p data-bbox="94 1291 292 1316">CONTRASTING COVERS</p> 	CC	<p data-bbox="581 1291 682 1316"><i>Overall: N/A</i></p> <hr/> <p data-bbox="581 1396 1477 1497">\$129 <i>NOTE: If Two Or More Upholsteries Or Leathers Are Used On Any Piece Of Furniture, Then A Contrast Charge Will Apply Per Order. When Using Trinity Upholstery, The Higher Priced Upholstery Grade Will Be Used In Pricing, Unless It's Trinity Leather With Fabric Contrast Welt, Or COM With Trinity Contrast Welt, Then Contact Customer Service For Pricing.</i></p> <p data-bbox="581 1543 852 1568"><i>Available: Austen Lounge Collection</i></p>